

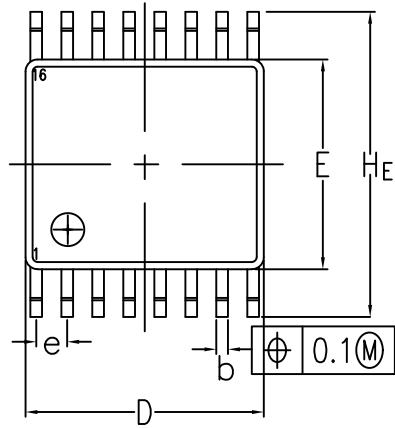
BASED ON JEDEC JEP95: MO-153

1. DIMENSIONS

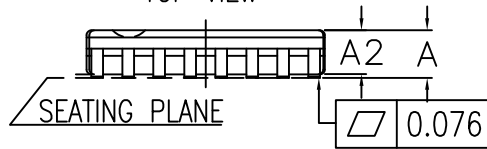
DIMENSIONS IN MILLIMETERS

DATE CREATED		REVISIONS	
REV	DESCRIPTION	AUTHOR	
9/20/18	00	Revised from PSC-4749 PGG16	Eddie Lee/CM
6/14/19	01	Correct Title Description	RC/CM
8/29/19	02	EPAD OPTION ADDED	CM
12/10/19	03	EPAD OPTION ADDED	CM

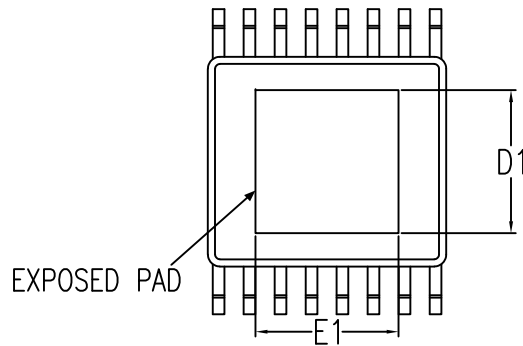
NOTE: REFER TO DCP FOR OFFICIAL RELEASE DATE



TOP VIEW

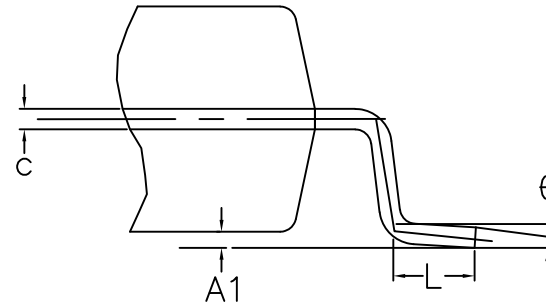


SIDE VIEW



BOTTOM VIEW

VIEW X




DIMENSIONS	min	max
A	0.90	1.20
A1	0.05	0.15
A2	0.80	1.05
b	0.20	0.30
c	0.10	0.20
D	4.90	5.10
E	4.30	4.50
D1	REFER TO EPAD OPTION	
E1	REFER TO EPAD OPTION	
e	0.65nom	
HE	6.20	6.60
L	0.45	0.75
θ	0°	8°

* WITHOUT MOLD FLASH

- 2. WEIGHT ≤ 0.05 g
- 3. BODY MATERIAL LOW STRESS EPOXY
- 4. LEAD MATERIAL Cu-ALLOY
- 5. LEAD FINISH SOLDER PLATING
- 6. LEAD FORM Z-BENDS

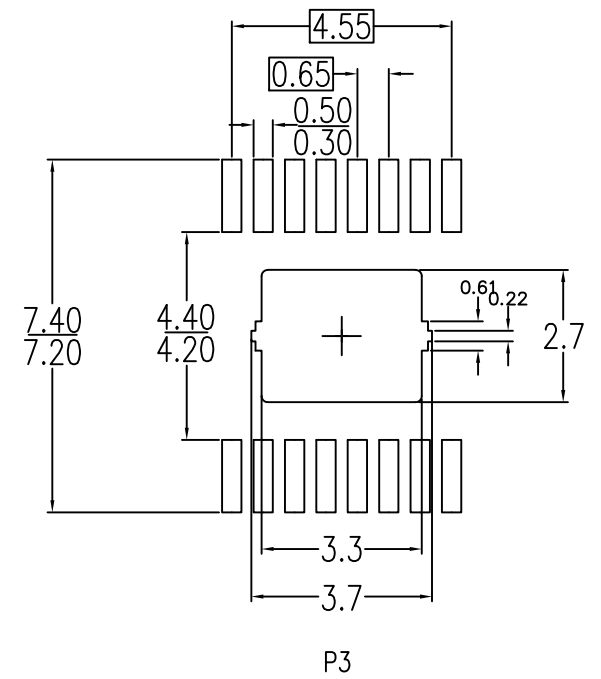
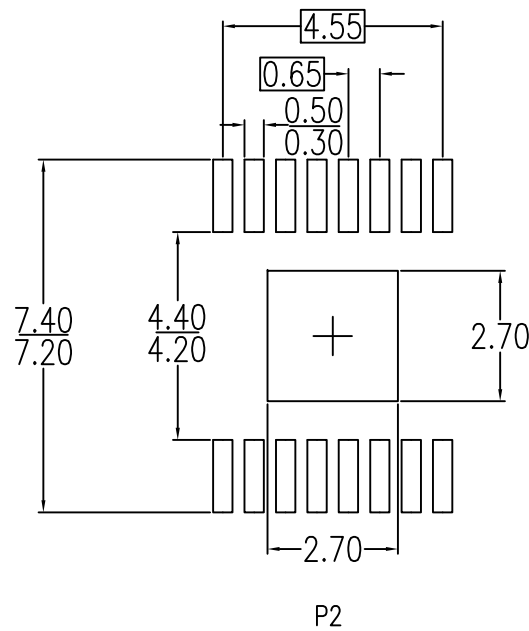
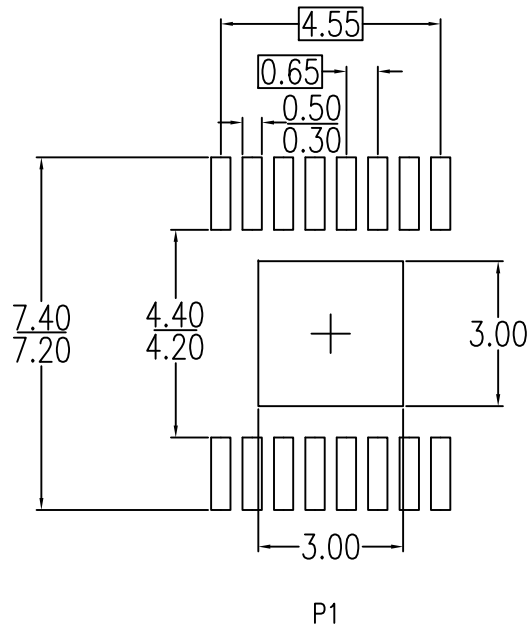
EPAD OPTIONS:

SYMBOL	P1			P2			P3		
	MIN	NOM	MAX	MIN	NOM	MAX	MIN	NOM	MAX
D1	-	3.00	-	2.50	2.70	2.90	2.50	2.70	2.90
E1	-	3.00	-	2.50	2.70	2.90	3.10	3.30	3.50

TOLERANCES UNLESS SPECIFIED DECIMAL ANGULAR XXX± ± XXXX± ± XXXX± ±		6024 Silver Creek Valley Rd San Jose, CA 95138 PHONE: (408) 284-8200 FAX: (408) 284-3572	
		www.IDT.com	
TITLE ENG16 Package Outline Drawing 5.0 x 4.4 mm Body, 0.65mm Pitch TSSOP with EPAD			
SIZE C	DRAWING No. PSC-4761	REV 03	
DO NOT SCALE DRAWING			SHEET 1 OF 2


		REVISIONS	
DATE CREATED	REV	DESCRIPTION	AUTHOR
9/20/18	00	Revised from PSC-4749 PGG16	Eddie Lee/CM
6/14/19	01	Correct Title Description	RC/CM
8/29/19	02	EPAD OPTION ADDED	CM
12/10/19	03	EPAD OPTION ADDED	CM

NOTE: REFER TO DCP FOR OFFICIAL RELEASE DATE



LAND PATTERN DIMENSIONS

NOTE:
1. ALL DIMENSIONS ARE IN MILLIMETERS

TOLERANCES UNLESS SPECIFIED		 6024 Silver Creek Valley Rd San Jose, CA 95138 PHONE: (408) 284-8200 FAX: (408) 284-3572 www.IDT.com
DECIMAL	ANGULAR	
XX±	±	
XXX±		
XXXX±		
TITLE ENG16 Package Outline Drawing 5.0 x 4.4 mm Body, 0.65mm Pitch TSSOP with EPAD		
SIZE	DRAWING No.	REV
C	PSC-4761	03
DO NOT SCALE DRAWING		SHEET 2 OF 2