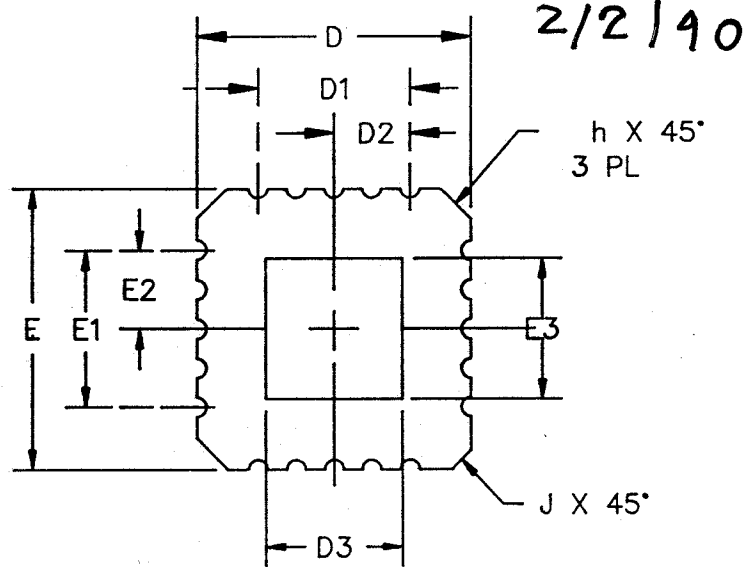
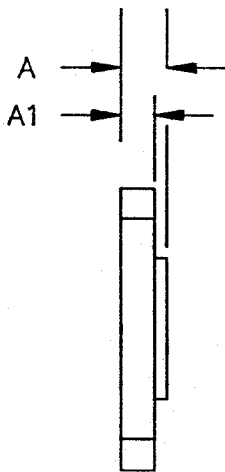
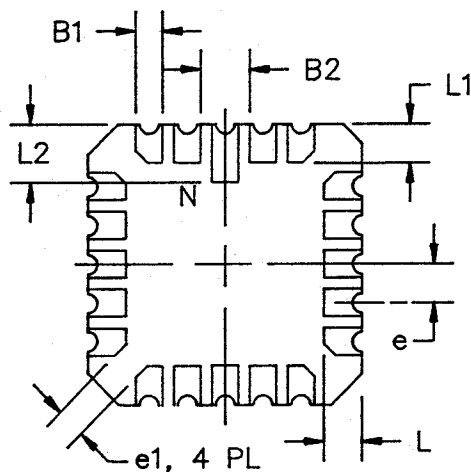


DCN	REV	DESCRIPTION	DATE	APPROVAL
17287	03	UPDATE TO STANDARDIZE DRAWING	2/2/90	S Thomas

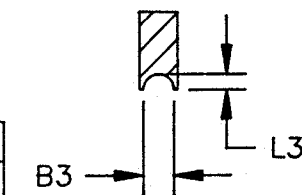


NOTES: (UNLES OTHERWISE SPECIFIED)

1. ALL DIMENSIONS ARE IN INCHES.
2. BSC - BASIC LEAD SPACING BETWEEN CENTERS.

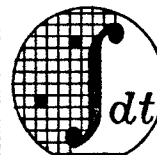


SYMBOL	MIN	MAX
A	.064	.100
A1	.054	.066
B1	.022	.028
B2	.072 REF	
B3	.006	.022
D/E	.342	.358
D1/E1	.200 BSC	
D2/E2	.100 BSC	
D3/E3	-	.358
e	.050 BSC	
e1	.015	-
h	.040 REF	
J	.020 REF	
L	.045	.055
L1	.045	.055
L2	.077	.093
L3	.003	.015
ND/NE	5	
N	20	



	CONFIGURATION	EXCEPTIONS
MIL-M-38510	C-2	NONE
JEDEC	MS-004-CB	NONE

TOLERANCES UNLESS OTHERWISE SPECIFIED
 FRAC DEC ANGLES
 ± - ± - ± -



Integrated Device Technology, Inc.
 3236 Scott Blvd., Santa Clara, CA 95051
 (408) 727-6116 FAX: (408) 727-2328

APPROVALS	DATE
DRAWN <i>AA</i>	02/90
CHECKED <i>DJ</i>	2/90

20 PIN LEADLESS CHIP CARRIER MKT DWG (SQ)

SCALE	SIZE	DRAWING NO.	REV
N/A	A	PSC-2013	03

DO NOT SCALE DRAWING

SHEET 2 OF 2