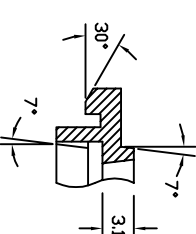
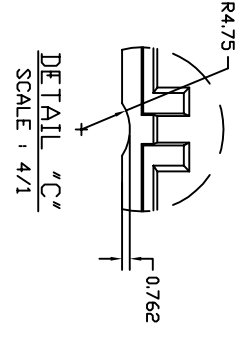


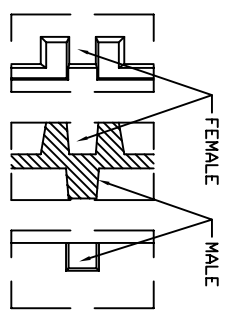
SECTION "X-X"  
TRAY STACKING DETAIL  
SCALE : 3/1



DETAIL "H"  
SCALE : 4/1



DETAIL "C"  
SCALE : 4/1



SLIP-LOCK DETAILS  
DETAIL "D"  
SCALE : 4/1

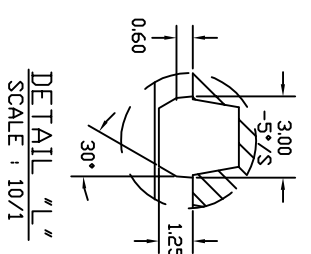
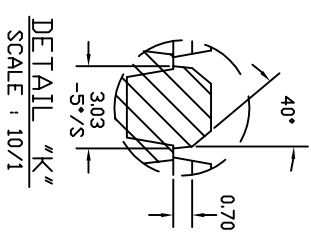
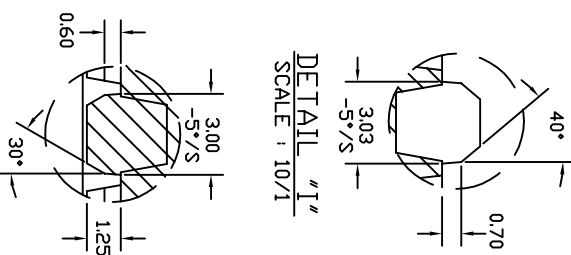
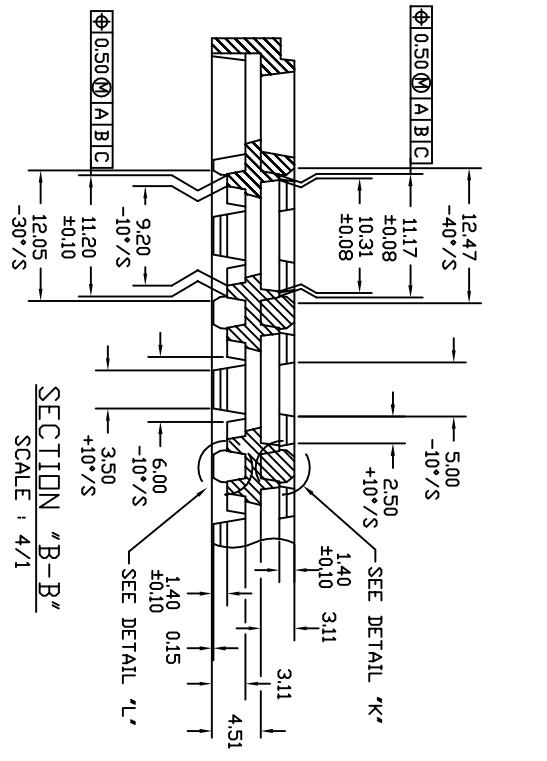
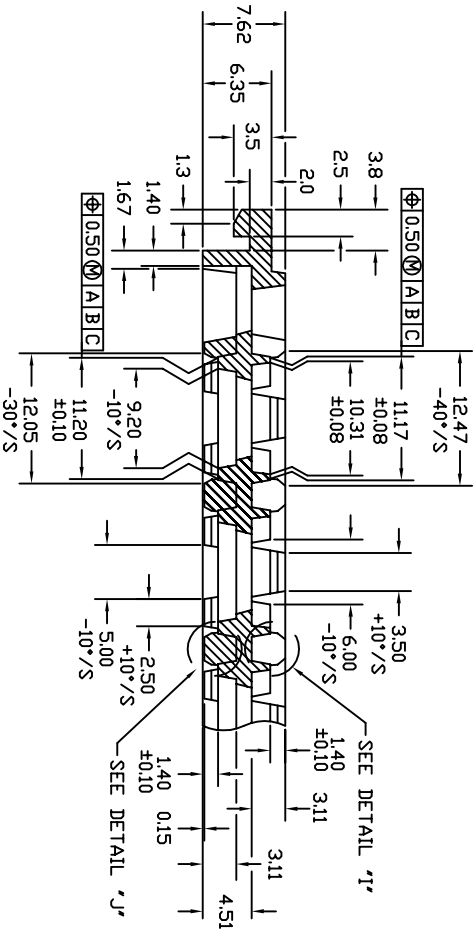
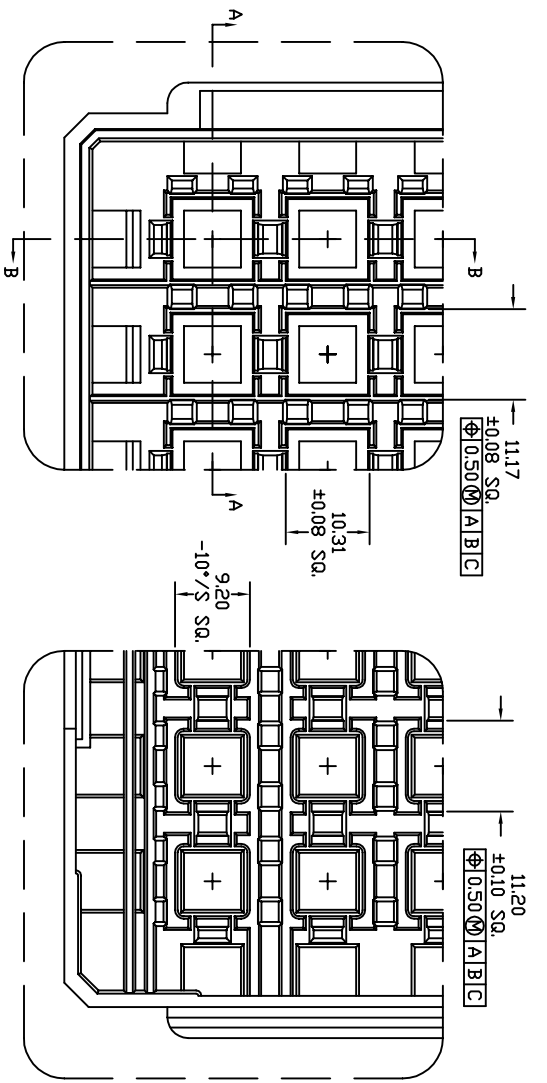
NOTES : (UNLESS OTHERWISE SPECIFIED)  
1. NUMBER OF POCKET : 8 X 21 = 168 POCKETS

TOLERANCES UNLESS OTHERWISE SPECIFIED  
DECIMAL : X ±.25  
.XX ±.13  
.XXX ±.13  
ANGLE : 35°  
ANGULAR : ±



6024 Silver Creek Valley Road,  
San Jose, CA 95138  
PHONE: (408) 284-8200  
FAX: (408) 284-3572

TITLE:		AC/ACG100 & BC/BCG100	
STOCK NO.		N/A	
DRAWING NO.		MSC-1702-A	
REV		00	
SCALE		N/A	
DO NOT SCALE DRAWING		SHEET 1 OF 2	



TOLERANCES UNLESS OTHERWISE SPECIFIED  
 DECIMAL : X ±.25  
 .XX ±.13  
 .XXX ±.13  
 ANGLE : ±5°  
 ANGULAR : ±

**IDT**  
 www.IDT.com  
 6024 Silver Creek Valley Road,  
 San Jose, CA 95138  
 PHONE: (408) 284-8200  
 FAX: (408) 284-3572

TITLE: AC/ACG100 & BC/BCG100 SHIPPING TRAY		SCALE N/A
STOCK NO. N/A	DRAWING NO. MSC-1702-A	REV 00
DO NOT SCALE DRAWING		SHEET 2 OF 2