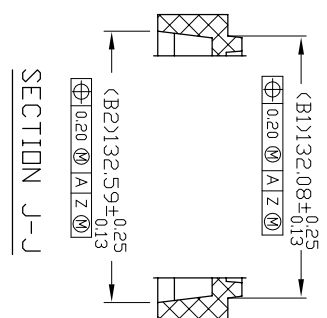
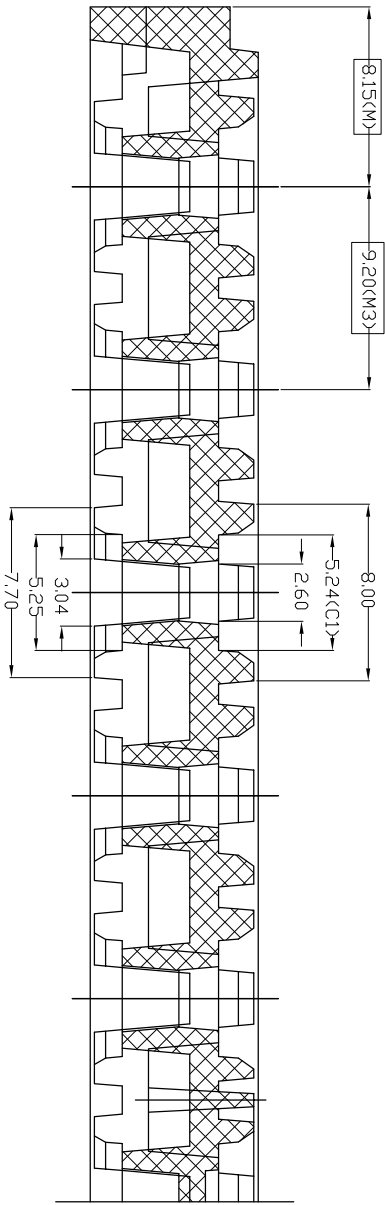
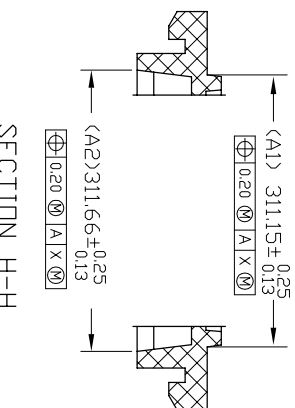
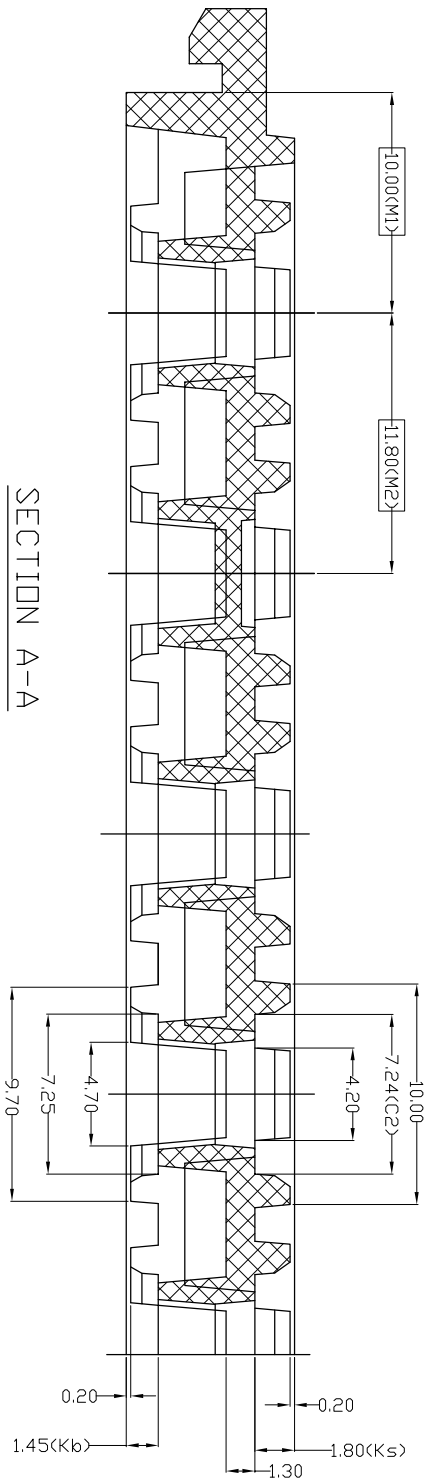


NOTES : (UNLESS OTHERWISE SPECIFIED)  
 1. NUMBER OF POCKETS : 14 X 26 = 364 POCKETS

TOLERANCES UNLESS OTHERWISE SPECIFIED		DECIMAL		ANGLE	
.XX ± .25		.XX ± .13		± .5°	
.XXX ± .13					
APPROVALS	DATE	www.IDT.com			
DRAWN		6024 Silver Creek Valley Road, San Jose, CA 95138 PHONE: (408) 284-8200 FAX: (408) 284-5572			
TITLE:		CD 6/10 SHIPPING TRAY			
STOCK NO.	DRAWING NO.	REV	SCALE		
N/A	MSC-5803-A	00	N/A		
DO NOT SCALE DRAWING		SHEET 1 OF 2			



SECTION B-B

SECTION A-A

SECTION J-J

SECTION H-H

TOLERANCES UNLESS OTHERWISE SPECIFIED  
 DECIMAL .25  
 .XX ± .13  
 .XXX ± .13  
 ANGLE ±.5°  
 APPROVALS

**IDT**  
 6024 Silver Creek Valley Road  
 San Jose, CA 95138  
 PHONE: (408) 284-8200  
 FAX: (408) 284-5572  
 www.IDT.com

TITLE:	CD 6/10 SHIPPING TRAY	SCALE:	N/A
STOCK NO.	N/A	REV	00
DRAWING NO.	MSC-5803-A	SIZE	
DO NOT SCALE DRAWING		SHEET	2 OF 2