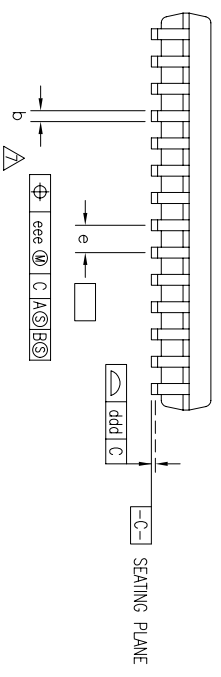
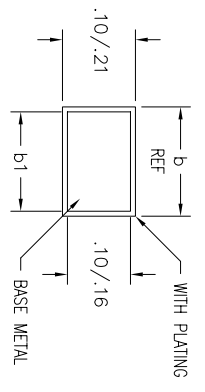
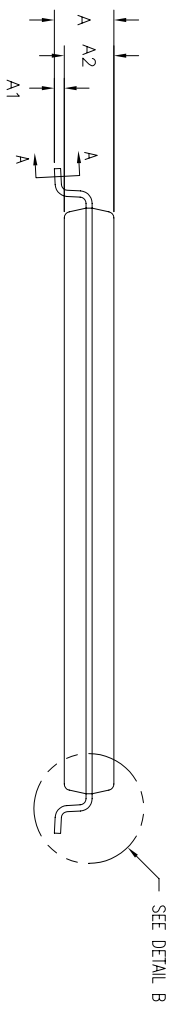
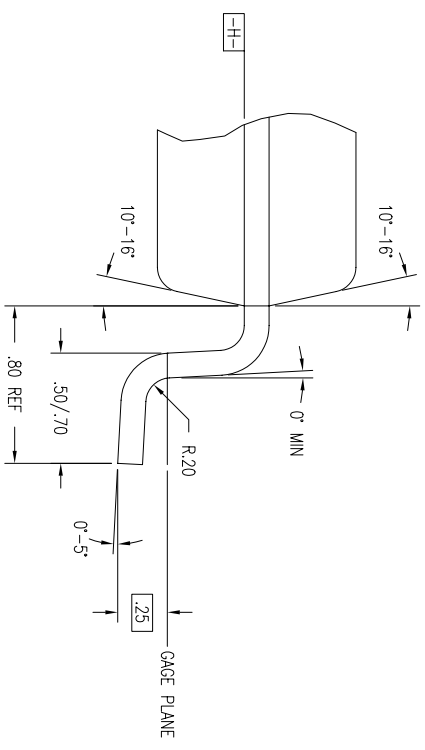
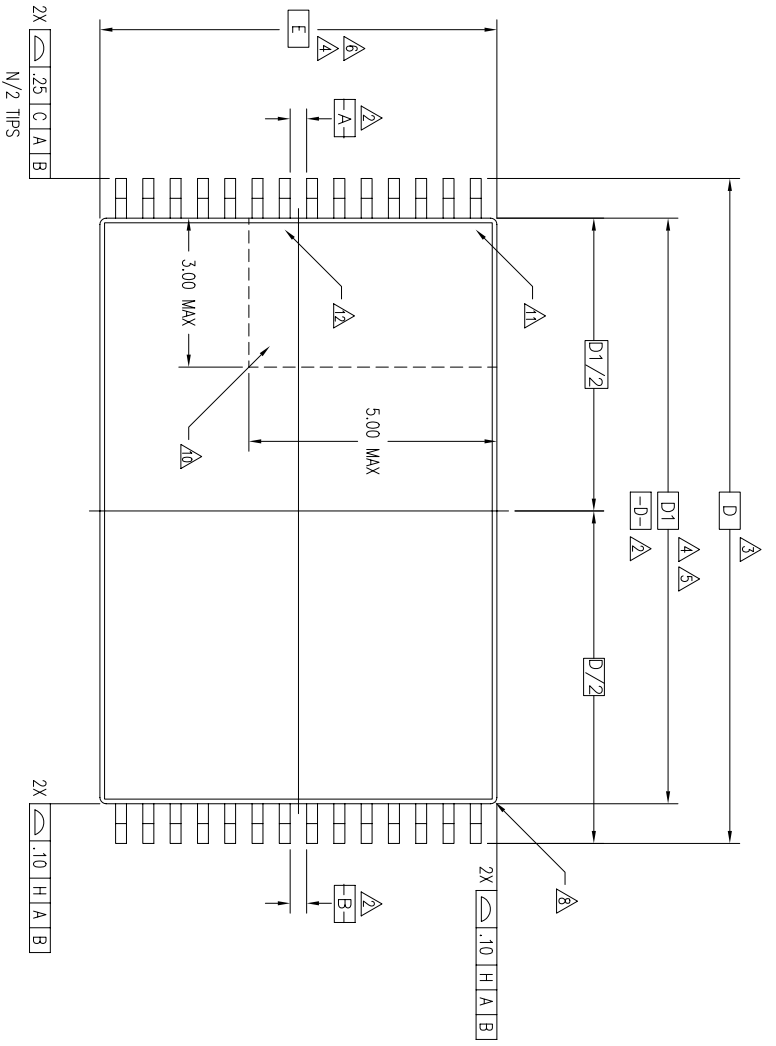


REVISIONS			
REV	DESCRIPTION	DATE	APPROVED
01	REDRAW TO ANSI Y14.5M-1982	03/15/95	T. VU
02	ADD 32 LD	06/25/97	TU VU
03	ADD "GREEN" PZG NOMENCLATURE	10/13/04	TU VU
04	ADDED PACKAGE CODE	12/12/12	RC



TOLERANCES UNLESS SPECIFIED		www.IDT.com	
DECIMAL	ANGULAR	6024 SILVERCREEK VALLEY RD SAN JOSE CA 95138 PHONE: (408) 284-8200 FAX: (408) 284-8591	
±	±	PZ/PZG PACKAGE OUTLINE	
APPROVALS	DATE	8.0 X 13.4 X 1.0 mm TSOP TYPE I	
DRAWN		SIZE	DRAWING No.
CHECKED		C	PSC-4044
		REV	04
DO NOT SCALE DRAWING		SHEET 1 OF 2	

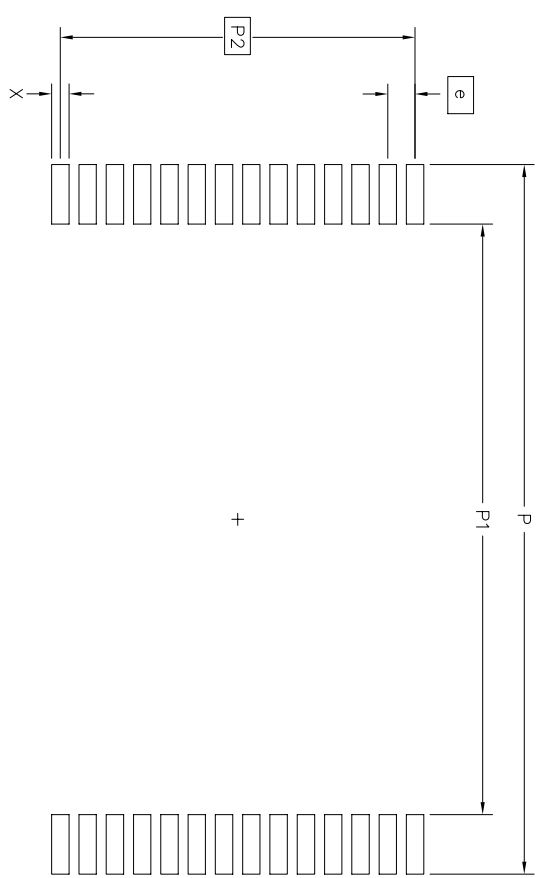
REV	DESCRIPTION	DATE	APPROVED
01	REDRAW TO ANSI Y14.5M-1982	03/15/95	T. VU
02	ADD 32 LD	06/25/97	T. VU
03	ADD "GREEN" PZG NOMENCLATURE	10/13/04	T. VU
04	ADDED PACKAGE CODE	12/12/12	RC

LAND PATTERN DIMENSIONS

SYMBOL	PZ/PZG28		PZ/PZG32	
	JEDEC VARIATION	NOT REGISTERED	JEDEC VARIATION	NOT REGISTERED
A	MIN	MAX	MIN	MAX
A1	-.05	-.15	-.05	-.15
A2	.90	1.00, 1.05	.90	1.00, 1.05
D	13.40 BSC	3	13.40 BSC	3
D1	11.80 BSC	4.5	11.80 BSC	4.5
E	8.00 BSC	4.6	8.00 BSC	4.6
N	28	32		
e	.55 BSC	.50 BSC		
b	.17	.22	.17	.22
b1	.17	.20	.17	.23
ddd	-.10	-.10		
eee	-.08	-.08		

NOTES:

- ALL DIMENSIONING AND TOLERANCING CONFORM TO ANSI Y14.5M-1982
- DATUMS **-A-**, **-B-** AND **-D-** TO BE DETERMINED AT DATUM PLANE **-H-**
- DIMENSION D TO BE DETERMINED AT SEATING PLANE **-C-**
- DIMENSIONS D1 AND E ARE TO BE DETERMINED AT DATUM PLANE **-H-**
- DIMENSION D1 DOES NOT INCLUDE INTERLEAD FLASH OR PROTRUSIONS. INTERLEAD FLASH OR PROTRUSIONS SHALL NOT EXCEED .25 mm PER SIDE
- DIMENSION E DOES NOT INCLUDE MOLD FLASH, PROTRUSIONS OR GATE BURRS. MOLD FLASH, PROTRUSIONS OR GATE BURRS SHALL NOT EXCEED .15 mm PER SIDE
- LEAD WIDTH DIMENSION DOES NOT INCLUDE DAMBAR PROTRUSION. ALLOWABLE DAMBAR PROTRUSION IS .08 mm IN EXCESS OF THE LEAD WIDTH DIMENSION AT MAXIMUM MATERIAL CONDITION. DAMBAR CANNOT BE LOCATED ON THE LOWER RADIUS OR THE FOOT
- EXACT SHAPE OF EACH CORNER IS OPTIONAL
- THESE DIMENSIONS APPLY TO THE FLAT SECTION OF THE LEAD BETWEEN .10 AND .25 mm FROM THE LEAD TIP
- DETAILS OF MECHANICAL PIN 1 IDENTIFIER IS OPTIONAL BUT MUST BE LOCATED WITHIN THE ZONE INDICATED
- ELECTRICAL PIN 1 IDENTIFIER FOR 32 LEAD PACKAGE
- ELECTRICAL PIN 1 IDENTIFIER FOR 28 LEAD PACKAGE
- ALL DIMENSIONS ARE IN MILLIMETERS
- THIS OUTLINE CONFORMS TO JEDEC PUBLICATION 95 REGISTRATION MO-183, VARIATION AA



	MIN	MAX	MIN	MAX
P	14.20	14.40	14.20	14.40
P1	11.60	11.80	11.60	11.80
P2	7.15 BSC	P2	7.50 BSC	
X	.30	.40	X	.30
e	.55 BSC		e	.50 BSC
N	28		N	32

TOLERANCES UNLESS SPECIFIED
 DECIMAL ±
 ANGULAR ±

APPROVALS: DATE

CHECKED

SIZE: DRAWING No. PSC-4044

DO NOT SCALE DRAWING

SHEET 2 OF 2

www.IDT.com

6024 SILVERCREEK VALLEY RD
 SAN JOSE CA 95138
 PHONE: (408) 284-8200
 FAX: (408) 284-9591