



Integrated Device Technology, Inc.
6024 Silver Creek Valley Road, San Jose, CA 95138

PRODUCT/PROCESS CHANGE NOTICE (PCN)

PCN #: TB-0510-05 Product Affected: 48L, 56L, 64L TSSOP & 80L TVSOP & 48L, 56L TSSOP exposed pad (Green & Standard) Date Effective: 13-Jan-2006	DATE: 14-Dec-2005	MEANS OF DISTINGUISHING CHANGED DEVICES: <input type="checkbox"/> Product Mark <input type="checkbox"/> Back Mark <input type="checkbox"/> Date Code <input checked="" type="checkbox"/> Other
--	--------------------------	--

Rev 07 printed on shipping tube

Contact: Geoffrey Cortes Title: Manager, Corporate Quality & Reliability Phone #: (408) 284-8321 Fax #: (408) 284-1450 E-mail: Geoffrey.Cortes@idt.com	Attachment: <input checked="" type="checkbox"/> Yes <input type="checkbox"/> No Samples: N/A
---	---

DESCRIPTION AND PURPOSE OF CHANGE:

<input type="checkbox"/> Die Technology <input type="checkbox"/> Wafer Fabrication Process <input type="checkbox"/> Assembly Process <input type="checkbox"/> Equipment <input type="checkbox"/> Material <input type="checkbox"/> Testing <input type="checkbox"/> Manufacturing Site <input type="checkbox"/> Data Sheet <input checked="" type="checkbox"/> Other - Packaging	<p>IDT will introduce a more robust shipping tube used to pack TSSOP, TVSOP and TSSOP exposed pad packages. This change is to increase the wall thickness in order to provide better protection to the packages during assembly, test and back-end processes.</p> <p>Attachment I details the change of the shipping tube's wall thickness and the qualification data.</p> <p>Attachment II provides the list of products affected.</p>
--	---

RELIABILITY/QUALIFICATION SUMMARY:

There is no impact with regards to the package performance or reliability.

CUSTOMER ACKNOWLEDGMENT OF RECEIPT:

IDT records indicate that you require written notification of this change. Please use the acknowledgement below or E-Mail to grant approval or request additional information. If IDT does not receive acknowledgement within 30 days of this notice it will be assumed that this change is acceptable.

IDT reserves the right to ship either version manufactured after the process change effective date until the inventory on the earlier version has been depleted.

Customer: _____	<input type="checkbox"/> <i>Approval for shipments prior to effective date.</i>
Name/Date: _____	E-Mail Address: _____
Title: _____	Phone# /Fax# : _____

CUSTOMER COMMENTS: _____

IDT ACKNOWLEDGMENT OF RECEIPT:

RECD. BY: _____ DATE: _____



Integrated Device Technology, Inc.
6024 Silver Creek Valley Road, San Jose, CA 95138

PRODUCT/PROCESS CHANGE NOTICE (PCN)

ATTACHMENT I - PCN #: TB-0510-05

PCN Type: Packing/Shipping

Data Sheet Change: None

Detail of Change: This change is to increase the shipping tube's wall thickness in order to provide better protection to the packages during assembly, test and back-end processes. The changed shipping tube will be printed with Rev. 07 as shown in the detailed drawing.

Description	Existing Tube	New Tube
Wall Thickness (inch)	0.015 - 0.020	0.017 - 0.023
Revision Printed on Tube	Rev. 06	Rev. 07

Qualification Test Plan and Result:

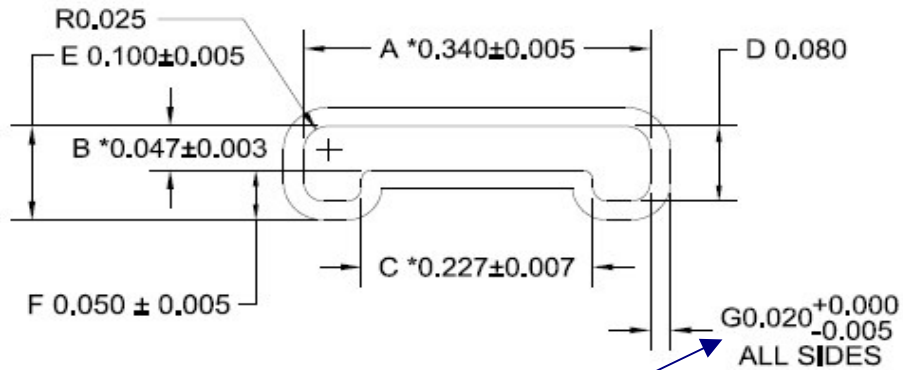
Description	Reject/Sample Size	Result
Drop Test, 6ft	0/10 tubes	Pass
Manufacturability (IC Fitting, Trim&Form Machine, Vision System, Test Handler)	0/10 tubes	Pass
Visual/Mechanical	0/5 tubes	Pass
Static Electricity Test	0/5 tubes	Pass
Dimensional	0/5 tubes	Pass



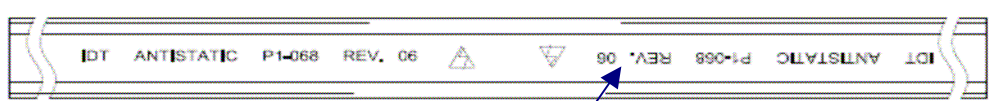
PRODUCT/PROCESS CHANGE NOTICE (PCN)

ATTACHMENT I - PCN #: TB-0510-05

Existing Shipping Tube

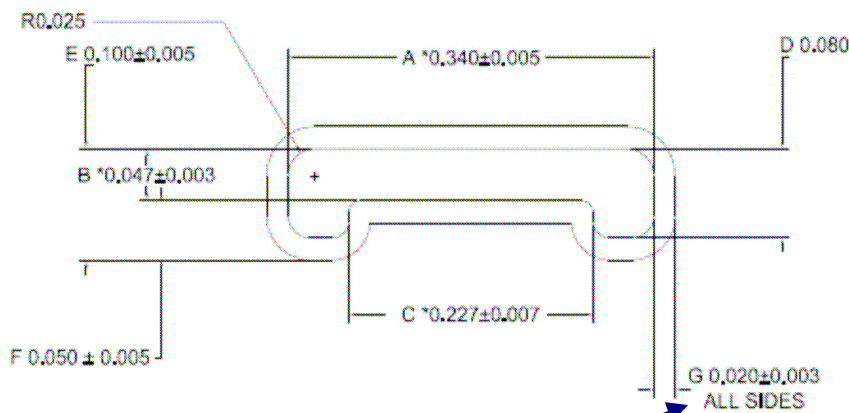


Existing Tube – wall thickness : 0.015 to 0.020



Existing Tube – printed revision, REV.06

New Shipping Tube



New Tube – wall thickness : 0.017 to 0.023



New Tube – printed revision, REV.07

ALL DIMENSIONS ARE IN INCHES



Integrated Device Technology, Inc.
6024 Silver Creek Valley Road, San Jose, CA 95138

PRODUCT/PROCESS CHANGE NOTICE (PCN)

ATTACHMENT II - PCN #: TB-0510-05

Affected Part Number

IDT Part Number	IDT Part Number	IDT Part Number	IDT Part Number
IDT5T9070PAGI	IDT74ALVC162244PA	IDT74AUC16373PAI	IDT74FCT16245CTPAG
IDT5T9070PAI	IDT74ALVC162245PA	IDT74AUC16374PAI	IDT74FCT16245ETPA
IDT5T907PAGI	IDT74ALVC162245PAG	IDT74AUC164245PAI	IDT74FCT16245ETPAG
IDT5T907PAI	IDT74ALVC162334PA	IDT74AUCH16245PAI	IDT74FCT162501ATPA
IDT5T915PAGI	IDT74ALVC16244APA	IDT74AUCR16245PAI	IDT74FCT162501CTPA
IDT5T915PAI	IDT74ALVC16245PA	IDT74CBTLV16210PA	IDT74FCT162511ATPA
IDT7280L12PA	IDT74ALVC16245PAG	IDT74CBTLV16211PA	IDT74FCT162511CTPA
IDT7280L15PA	IDT74ALVC162836PA	IDT74CBTLV16211PAG	IDT74FCT162543ATPA
IDT7280L15PAI	IDT74ALVC164245PA	IDT74CBTLV16212PA	IDT74FCT162543ATPAG
IDT7280L20PA	IDT74ALVC164245PAG	IDT74CBTLV16212PAG	IDT74FCT162543CTPA
IDT7281L12PA	IDT74ALVC16835PA	IDT74CBTLV16214PA	IDT74FCT162543CTPAG
IDT7281L15PA	IDT74ALVC16841PA	IDT74CBTLV16245PA	IDT74FCT16260ATPA
IDT7281L15PAI	IDT74ALVCF162835APA	IDT74CBTLV16292PA	IDT74FCT16260CTPA
IDT7281L20PA	IDT74ALVCF162835APAG	IDT74CBTLV16292PAG	IDT74FCT16260ETPA
IDT7282L12PA	IDT74ALVCH162244PA	IDT74CBTLV16800PA	IDT74FCT162646ATPA
IDT7282L12PAG	IDT74ALVCH162244PAG	IDT74CBTLVR16292PA	IDT74FCT162646CTPA
IDT7282L15PA	IDT74ALVCH162245PA	IDT74FCT162240ATPA	IDT74FCT162652ATPA
IDT7282L15PAI	IDT74ALVCH162245PAG	IDT74FCT162240CTPA	IDT74FCT162652CTPA
IDT7282L20PA	IDT74ALVCH162373PA	IDT74FCT162244ATPA	IDT74FCT162823ATPA
IDT7283L12PA	IDT74ALVCH162374PA	IDT74FCT162244ATPAG	IDT74FCT162823CTPA
IDT7283L15PA	IDT74ALVCH16244PA	IDT74FCT162244CTPA	IDT74FCT162827ATPA
IDT7283L15PAGI	IDT74ALVCH16245PA	IDT74FCT162244CTPAG	IDT74FCT162827ATPAG
IDT7283L15PAI	IDT74ALVCH16260PA	IDT74FCT162244ETPA	IDT74FCT162827CTPA
IDT7283L20PA	IDT74ALVCH162820PA	IDT74FCT162244ETPAG	IDT74FCT162827CTPAG
IDT7284L12PA	IDT74ALVCH162827PA	IDT74FCT162245ATPA	IDT74FCT162841ATPA
IDT7284L15PA	IDT74ALVCH16345PA	IDT74FCT162245ATPAG	IDT74FCT162841CTPA
IDT7284L15PAI	IDT74ALVCH16373PA	IDT74FCT162245CTPA	IDT74FCT162H245ATPA
IDT7284L20PA	IDT74ALVCH16374PA	IDT74FCT162245CTPAG	IDT74FCT162H245CTPA
IDT7285L12PA	IDT74ALVCH16501PA	IDT74FCT162373ATPA	IDT74FCT163244APA
IDT7285L15PA	IDT74ALVCH16721PA	IDT74FCT162373CTPA	IDT74FCT163244APAG
IDT7285L15PAI	IDT74ALVCH16823PA	IDT74FCT162373ETPA	IDT74FCT163244CPA
IDT7285L20PA	IDT74ALVCH16863PA	IDT74FCT162374ATPA	IDT74FCT163244CPAG
IDT72V81L15PA	IDT74ALVCH16901PA	IDT74FCT162374CTPA	IDT74FCT163245APA
IDT72V81L20PA	IDT74ALVCH16903PA	IDT74FCT162374ETPA	IDT74FCT163245CPA
IDT72V81L20PAG	IDT74ALVCH16952PA	IDT74FCT16240ATPA	IDT74FCT163344APA
IDT72V81L20PAI	IDT74ALVCHR162245PA	IDT74FCT16240CTPA	IDT74FCT163344CPA
IDT72V82L15PA	IDT74ALVCHR162245PAG	IDT74FCT16240ETPA	IDT74FCT163373APA
IDT72V82L20PA	IDT74ALVCHR162269APA	IDT74FCT16244ATPA	IDT74FCT163373APAG
IDT72V83L15PA	IDT74ALVCHR16501PA	IDT74FCT16244ATPAG	IDT74FCT163373CPA
IDT72V83L20PA	IDT74ALVCHR16601PA	IDT74FCT16244CTPA	IDT74FCT163373CPAG
IDT72V84L15PA	IDT74ALVCHR16601PAG	IDT74FCT16244CTPAG	IDT74FCT163374APA
IDT72V84L20PA	IDT74ALVCHS162830DF	IDT74FCT16245ATPA	IDT74FCT163374APAG
IDT72V85L15PA	IDT74ALVCHS162830DFG	IDT74FCT16245ATPAG	IDT74FCT163374CPA
IDT72V85L20PA	IDT74AUC16245PAI	IDT74FCT16245CTPA	IDT74FCT163374CPAG



Integrated Device Technology, Inc.
6024 Silver Creek Valley Road, San Jose, CA 95138

PRODUCT/PROCESS CHANGE NOTICE (PCN)

ATTACHMENT II - PCN #: TB-0510-05

Affected Part Number

IDT Part Number	IDT Part Number	IDT Part Number	IDT Part Number
IDT74FCT163501APA	IDT74FST32XL2384PAG	IDT74SSTV16857PA	IDTCV144PAG
IDT74FCT163501CPA	IDT74FST32XL384PA	IDT74SSTV16857PAG	IDTCV147PAG
IDT74FCT163601APA	IDT74LVC162244APA	IDT74SSTV16859PA	IDTCV149PA
IDT74FCT16373ATPA	IDT74LVC162244APAG	IDT74SSTV16859PAG	IDTCV149PAG
IDT74FCT16373CTPA	IDT74LVC162245APA	IDT74SSTVF16857PA	IDTCV154PAG
IDT74FCT16374ATPA	IDT74LVC162245APAG	IDT74SSTVF16857PAG	IDTCV161PAG
IDT74FCT16374ATPAG	IDT74LVC16244APA	IDT74SSTVF16859PA	IDTCV170PAG
IDT74FCT16374CTPA	IDT74LVC16244APAG	IDT74SSTVF16859PAG	IDTQS316212PA
IDT74FCT16374CTPAG	IDT74LVC16245APA	IDT74SSTVN16859CPAG	IDTQS316233PA
IDT74FCT16374ETPA	IDT74LVC16245APAG	IDT74SSTVN16859PA	IDTQS3VH16210PA
IDT74FCT16374ETPAG	IDT74LVC16344APA	IDT74SSTVN16859PAG	IDTQS3VH16210PAG
IDT74FCT163827APA	IDT74LVC16373APA	IDTCSPT857APA	IDTQS3VH16211PA
IDT74FCT163827CPA	IDT74LVC16374APA	IDTCSPT857CPA	IDTQS3VH16211PAG
IDT74FCT164245TPA	IDT74LVC16501APA	IDTCSPT857CPAG	IDTQS3VH16212PA
IDT74FCT164245TPAG	IDT74LVC16601APA	IDTCSPT857CPAI	IDTQS3VH16212PAG
IDT74FCT16501ATPA	IDT74LVC16646APA	IDTCSPT857DPA	IDTQS3VH16233PA
IDT74FCT16501ATPAG	IDT74LVC16823APA	IDTCSPT857DPAG	IDTQS3VH16233PAG
IDT74FCT16501CTPA	IDT74LVC16827APA	IDTCSPT857DPAI	IDTQS3VH16244PA
IDT74FCT16501CTPAG	IDT74LVC16827APAG	IDTCSPT857PA	IDTQS3VH16244PAG
IDT74FCT16543ATPA	IDT74LVC16841APA	IDTCSPT857PAI	IDTQS3VH16245PA
IDT74FCT16543CTPA	IDT74LVC16952APA	IDTCV110JPA	IDTQS3VH16245PAG
IDT74FCT16543ETPA	IDT74LVCH162244APA	IDTCV110NPAG	IDTQS3VH16800PA
IDT74FCT166244ATPA	IDT74LVCH162244APAG	IDTCV111IPA	IDTQS3VH16861PA
IDT74FCT166244CTPA	IDT74LVCH162245APA	IDTCV111IPAG	IDTQS3VH16861PAG
IDT74FCT16652ATPA	IDT74LVCH162245APAG	IDTCV125PA	IDTQS3VH16862PA
IDT74FCT16652CTPA	IDT74LVCH162373APA	IDTCV125PAG	
IDT74FCT16823ATPA	IDT74LVCH162374APA	IDTCV126PA	
IDT74FCT16823CTPA	IDT74LVCH16244APA	IDTCV126PAG	
IDT74FCT16823ETPA	IDT74LVCH16245APA	IDTCV128PA	
IDT74FCT16952ATPA	IDT74LVCH16245APAG	IDTCV128PAG	
IDT74FCT16952CTPA	IDT74LVCH16276APA	IDTCV133PA	
IDT74FCT16952ETPA	IDT74LVCH16373APA	IDTCV133PAG	
IDT74FST163211PA	IDT74LVCH16374APA	IDTCV136PA	
IDT74FST163211PAG	IDT74LVCH16501APA	IDTCV136PAG	
IDT74FST163212PA	IDT74LVCH16543APA	IDTCV137PA	
IDT74FST163232PA	IDT74LVCH16543APAG	IDTCV137PAG	
IDT74FST163233PA	IDT74LVCH16601APA	IDTCV139PAG	
IDT74FST163233PAG	IDT74LVCH16646APA	IDTCV140PA	
IDT74FST163244PA	IDT74LVCH16827APA	IDTCV140PAG	
IDT74FST163245PA	IDT74LVCHR162245APA	IDTCV141PA	
IDT74FST163245PAG	IDT74LVCHR162245APAG	IDTCV141PAG	
IDT74FST1632861PA	IDT74LVCHR16646APA	IDTCV142PA	
IDT74FST1632861PAG	IDT74LVCR162245APA	IDTCV142PAG	
IDT74FST32XL2384PA	IDT74LVCR162245APAG	IDTCV144PA	