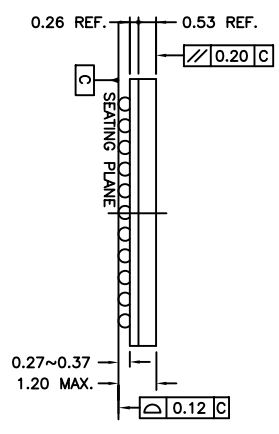
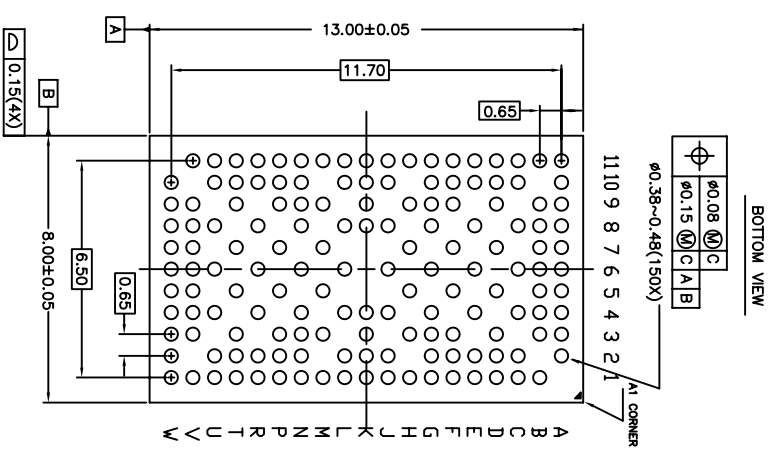
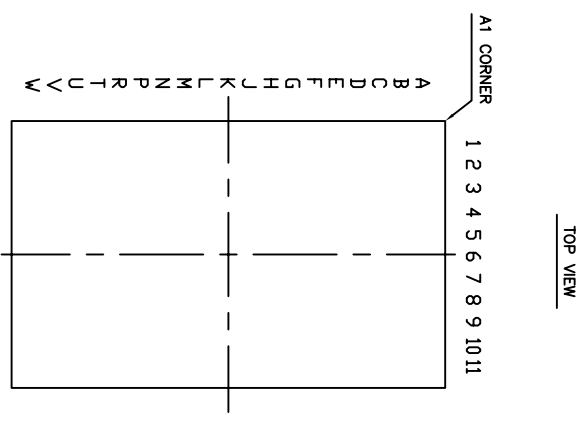


REVISIONS			
REV	DESCRIPTION	DATE	APPROVED
01	ADD "GREEN" BKG NOMENCLATURE	10/19/04	P.PAIK
02	COMBINE POD & LAND PATTERN	06/20/13	KS

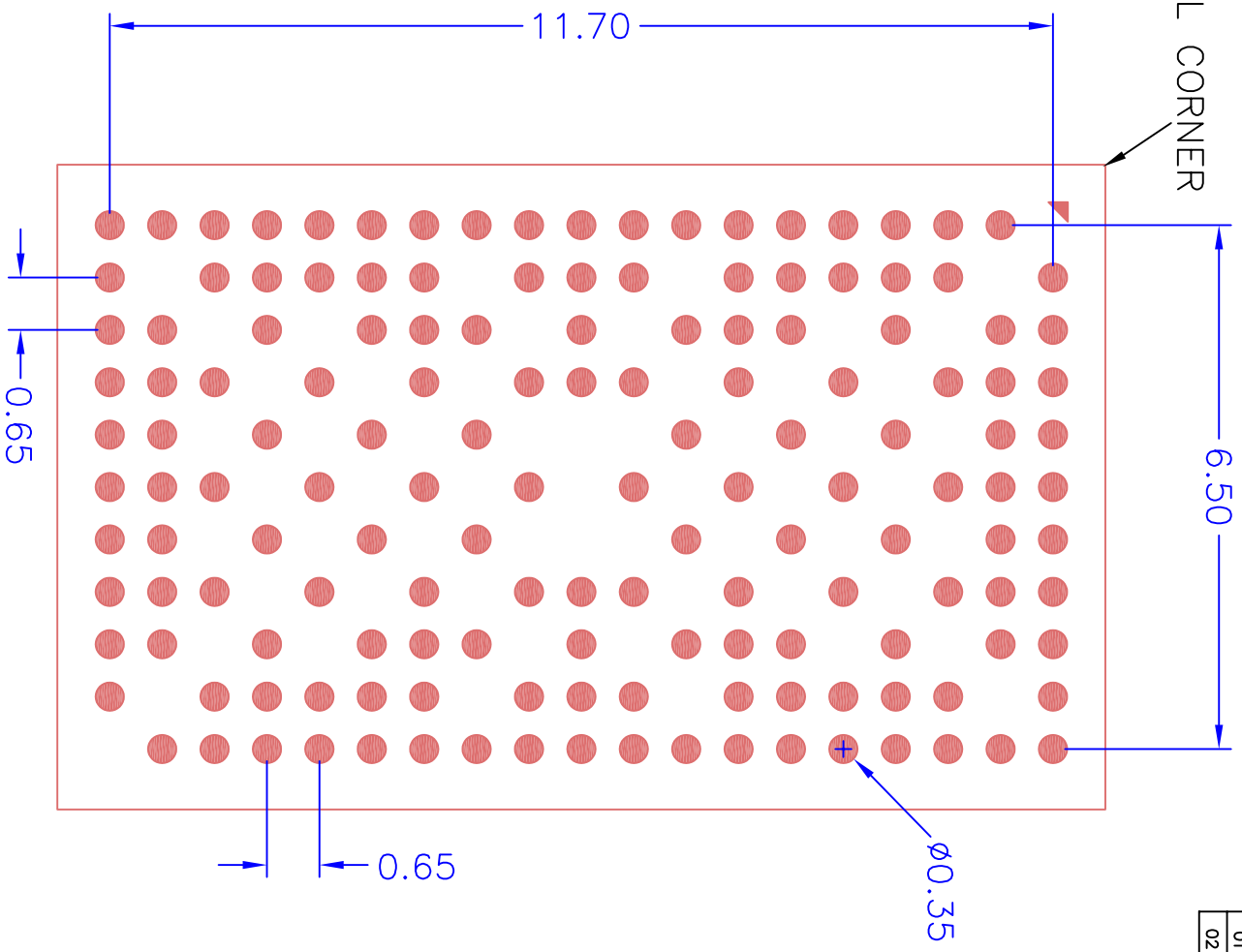


Ball Pitch :	0.65	Substrate Thickness :	0.26
Ball Diameter :	0.40	Mold Thickness :	0.53

TOLERANCES UNLESS SPECIFIED		www.IDT.com	
DECIMAL	ANGULAR	6024 SILVER CREEK VALLEY ROAD SAN JOSE, CA 95138 PHONE: (408) 284-8200 FAX: (408) 284-8991	
XXX±	XXX±	IDT™	
APPROVALS	DATE	TITLE BK/BKG 150 PACKAGE OUTLINE	
DRAWN P9P/P	02/17/04	8 x 13 mm BODY CTBGA	
CHECKED		0.65 mm PITCH	
		SIZE	DRAWING No.
		C	PSC-4129
		REV	02
DO NOT SCALE DRAWING		SHEET 1 OF 2	

REVISIONS			
REV	DESCRIPTION	DATE	APPROVED
01	ADD "GREEN" BKG NOMENCLATURE	10/19/04	P.PAIK
02	COMBINE POD & LAND PATTERN	06/20/13	KS

A1 BALL CORNER



RECOMMENDED LAND PATTERN

TOLERANCES UNLESS SPECIFIED		DATE	
DECIMAL	ANGULAR	27/1/13	
XXX			
XXX			
XXX			
DRAWN BY: [Signature]		TITLE: BK/BKG 150 PACKAGE OUTLINE	
CHECKED: [Signature]		8 x 13 mm BODY CTBGA	
0.65 mm PITCH		SIZE: C	
DRAWING No. PSC-4129		REV: 02	
DO NOT SCALE DRAWING			
SHEET 2 OF 2			


IDT
 2024 SILVER CREEK VALLEY ROAD
 SAN JOSE, CA 95138
 PHONE: (408) 284-8200
 FAX: (408) 284-8591
 WWW.IDT.COM