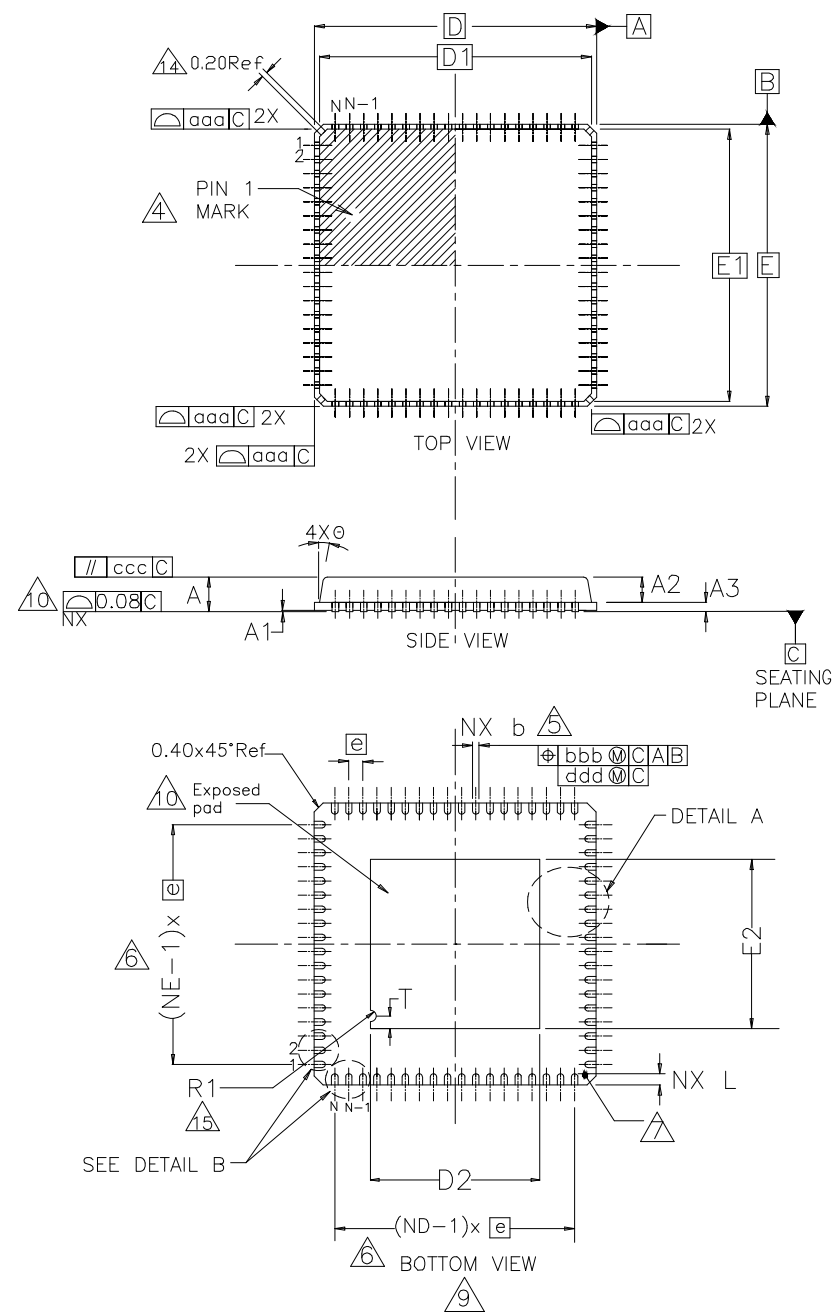


| REVISIONS | | | |
|-----------|------------------|--------|----------|
| REV | DESCRIPTION | DATE | APPROVED |
| 00 | INITIAL RELEASE. | 2/2/16 | JH |

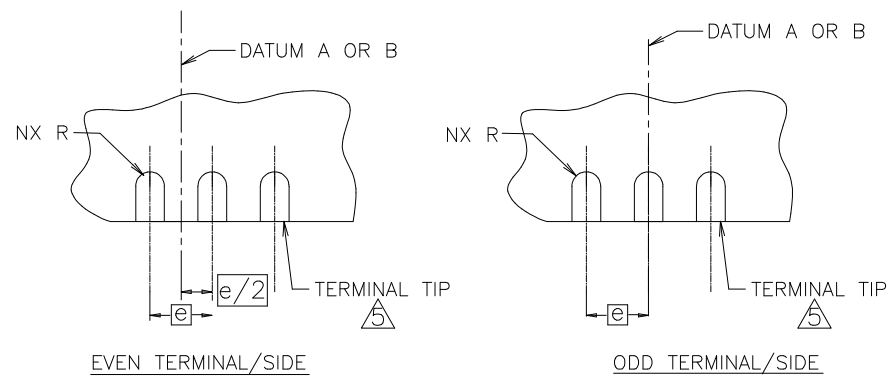


| SYMBOL | DIMENSION | | | NOTE |
|--------|-----------|-----------|------|------|
| | MIN. | NOM. | MAX. | |
| A | 0.80 | 0.90 | 1.00 | |
| A1 | 0 | 0.02 | 0.05 | |
| A2 | 0 | 0.65 | 1.00 | |
| A3 | | 0.20 REF. | | |
| D1 | | 9.75 BSC | | |
| E1 | | 9.75 BSC | | |
| N | | 72 | | 3 |
| Nd | | 18 | | 6 |
| Ne | | 18 | | 6 |
| A2 | 0.00 | 0.65 | 1.00 | |
| L | 0.30 | 0.40 | 0.50 | |
| k | | 1.60 | | |
| N | | 72 | | |
| Nd | | 18 | | |
| Ne | | 18 | | |
| θ | 0 | - | 14 | |
| T ref. | - | 0.45 | - | |
| R1 | - | 0.20 | - | |
| b | 0.18 | 0.25 | 0.30 | |
| Ⓢ | | 0.50 BSC | | |
| D | | 10.00 BSC | | |
| E | | 10.00 BSC | | |
| D2 | 5.80 | 5.90 | 6.00 | |
| E2 | 5.80 | 5.90 | 6.00 | |
| aaa | | 0.15 | | 1,2 |
| bbb | | 0.10 | | 1,2 |
| ccc | | 0.10 | | 1,2 |
| ddd | | 0.05 | | 1,2 |

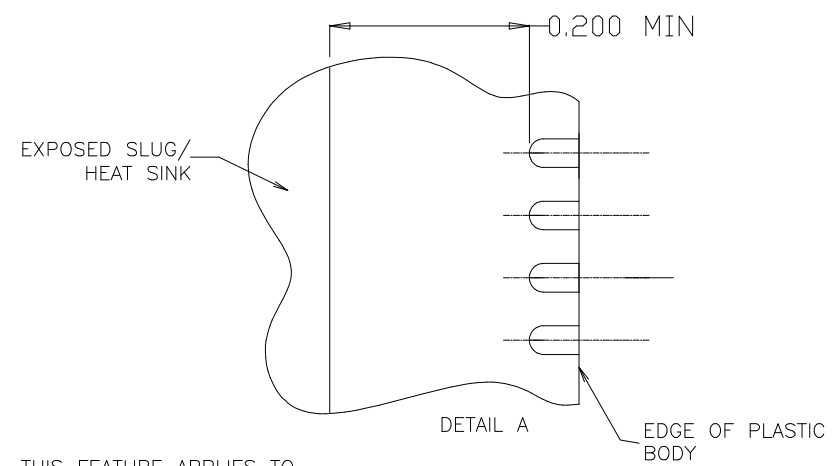
- NOTES:
1. DIMENSIONING & TOLERANCING CONFORM TO ASME Y14.5M-1994.
 2. ALL DIMENSIONS ARE IN MILLIMETERS. ANGLES ARE IN DEGREES.
 3. N IS THE TOTAL NUMBER OF TERMINALS.
Nd IS THE NUMBER OF TERMINALS IN X-DIRECTION &
Ne IS THE NUMBER OF TERMINALS IN Y-DIRECTION.
 4. THE TERMINAL #1 IDENTIFIER AND TERMINAL NUMBERING CONVENTION SHALL CONFORM TO JEDEC PUB. 95 SEC. 4.3 SPP-002. DETAILS OF TERMINAL #1 IDENTIFIER ARE OPTIONAL, BUT MUST BE LOCATED WITHIN THE ZONE INDICATED. THE TERMINAL #1 IDENTIFIER MAY BE EITHER A MOLD OR MARKED FEATURE.
 5. DIMENSION b APPLIES TO METALLIZED TERMINAL AND IS MEASURED BETWEEN 0.25mm AND 0.30mm FROM TERMINAL TIP.
 6. ND AND NE REFER TO THE NUMBER OF TERMINALS ON EACH D AND E SIDE RESPECTIVELY.
 7. DEPOPULATION IS POSSIBLE IN A SYMMETRICAL FASHION.

| | | | |
|-----------------------------|---------|----------------------------------|---|
| TOLERANCES UNLESS SPECIFIED | | | 6024 Silver Creek Valley Rd San Jose, CA 95138 PHONE: (408) 284-8200 FAX: (408) 284-3572 |
| DECIMAL | ANGULAR | | |
| XX± | ± | www.IDT.com | |
| XXX± | | | |
| XXXX± | | | |
| APPROVALS | DATE | TITLE: NL/NLG72 PACKAGE OUTLINE | |
| DRAWN: BAC | 2/2/16 | 10.0 x 10.0 mm BODY, EP 5.9mm SQ | |
| CHECKED | | 0.50 mm Pitch QFN (PUNCH) | |
| | | SIZE | REV |
| | | C | PSC-4208-05 00 |
| | | DO NOT SCALE DRAWING | |
| | | SHEET 1 OF 3 | |

| REVISIONS | | | |
|-----------|------------------|--------|----------|
| REV | DESCRIPTION | DATE | APPROVED |
| 00 | INITIAL RELEASE. | 2/2/16 | JH |



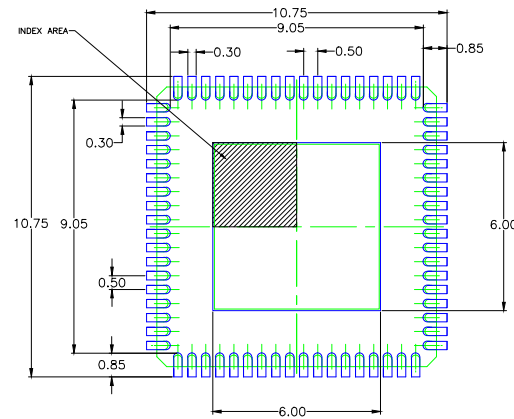
DETAIL B



THIS FEATURE APPLIES TO ALL ENDS OF THE PKG.

| | | | | |
|-----------------------------|---------|---|----------------------------------|--------------|
| TOLERANCES UNLESS SPECIFIED | | 6024 Silver Creek Valley Rd San Jose, CA 95138 PHONE: (408) 284-8200 FAX: (408) 284-3572 www.IDT.com | TITLE: NL/NLG72 PACKAGE OUTLINE | |
| DECIMAL | ANGULAR | | 10.0 x 10.0 mm BODY, EP 5.9mm SQ | |
| XX± | ± | | 0.50 mm Pitch QFN (PUNCH) | |
| XXX± | | | | |
| XXXX± | | | | |
| APPROVALS | DATE | SIZE | DRAWING No. | REV |
| DRAWN <i>ABC</i> | 2/2/16 | C | PSC-4208-05 | 00 |
| CHECKED | | DO NOT SCALE DRAWING | | SHEET 2 OF 3 |


| REVISIONS | | | |
|-----------|------------------|--------|----------|
| REV | DESCRIPTION | DATE | APPROVED |
| 00 | INITIAL RELEASE. | 2/2/16 | JH |



RECOMMENDED LAND PATTERN DIMENSION

NOTES:

1. ALL DIMENSIONS ARE IN mm. ANGLES IN DEGREES.
2. TOP DOWN VIEW. AS VIEWED ON PCB.
3. COMPONENT OUTLINE SHOWS FOR REFERENCE IN GREEN.
4. LAND PATTERN IN BLUE. NSMD PATTERN ASSUMED.
5. LAND PATTERN RECOMMENDATION PER IPC-7351B GENERIC REQUIREMENT FOR SURFACE MOUNT DESIGN AND LAND PATTERN.

| | | | | |
|--------------------------------|---------|--|---|--------------|
| TOLERANCES UNLESS SPECIFIED | |  www.IDT.com | 6024 Silver Creek Valley Rd San Jose, CA 95138 PHONE: (408) 284-8200 FAX: (408) 284-3572 | |
| DECIMAL | ANGULAR | | | |
| XXX± | ± | | | |
| XXXX± | | | | |
| APPROVALS | DATE | TITLE: NL/NLG72 PACKAGE OUTLINE | | |
| DRAWN <i>RA</i> | 2/2/16 | 10.0 x 10.0 mm BODY, EP 5.9mm SQ | | |
| CHECKED | | 0.50 mm Pitch QFN (PUNCH) | | |
| | | SIZE | DRAWING No. | REV |
| | | C | PSC-4208-05 | 00 |
| DO NOT SCALE DRAWING | | | | SHEET 3 OF 3 |