



Integrated Device Technology, Inc.  
6024 Silver Creek Valley Road  
San Jose, CA 95138 USA

## Manufacturing Bulletin

**Subject: Top mark change - 1562BM-201-4LF**

**Date: 26 July 2010**

**The purpose of this bulletin is to notify our customers that IDT is implementing a top mark change for device type ICS1562BM-201-4LF.**

**Presently device types ICS1562BM-201-4LF and ICS1562BM-201LF have same top mark except ICS1562BM-201-4LF has a green dot on the package to differentiate two device types. The new format provides the unique top mark for each device type, thus eliminating the need for a green dot.**

**The new top mark format is as follows:**

**Device Type - ICS1562BM-201-4LF**

	<u>Existing Top Mark</u>	<u>New Top Mark</u>
Line1	● ICS1562BMLF	ICS1562BM-4LF
Line2	YYWW-201	YYWW-201
Line3	LOT#	LOT#

**Please refer to attachment I for illustration.**

**Yours sincerely,**

**LS Koay**

**Manager, Product Assurance**

**Integrated Device Technology (Malaysia) Sdn Bhd.**

**[lkoay@idt.com](mailto:lkoay@idt.com)**

**Tel. # (604) 613-2283 (Malaysia)**



Integrated Device Technology, Inc.  
6024 Silver Creek Valley Road  
San Jose, CA 95138 USA

## Manufacturing Bulletin Attachment I

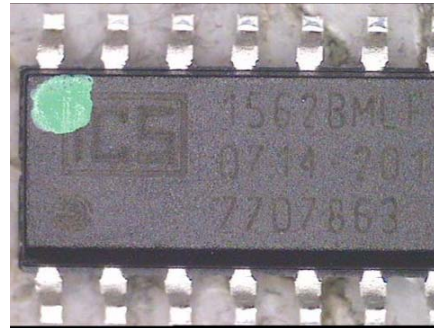
**Subject: Top mark change on 1562BM-201-4LF**

**Date: 26 July 2010**

**BEFORE**

Top Mark for 1562BM-201LF

Top Mark for 1562BM-201-4LF  
(With green dot)



**AFTER**

Top Mark for 1562BM-201LF

Top Mark for 1562BM-201-4LF  
(No green dot)

**No change**

