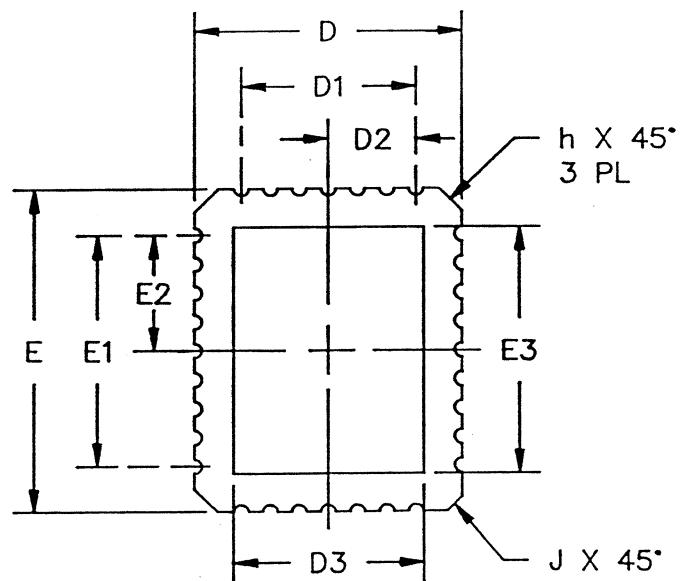
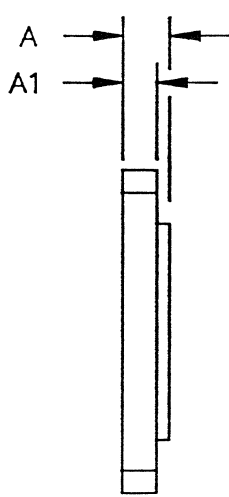


COVER SHEET AND REVISION STATUS				Page <u>01</u> of <u>02</u>
REV. NO.	DCN NUMBER	DATE	DESCRIPTION	APPROVAL (NAME/INITIALS)
04	17285	02/02/90	UPDATE TO STANDARDIZE, ADD NEW DIM.	S. THOMAS <i>ST</i> <i>Jn</i> 2/13/90
APPROVED DOCUMENT CHANGE NOTICE (DCN) ON <u>FILE IN DOCUMENT CONTROL</u> COMPANY PRIVATE MAY NOT BE REPRODUCED WITHOUT PERMISSION			TYPE OF SPECIFICATION: PRODUCT (WANG 3 - CPSC)	
			TITLE: 32 PIN LEADLESS CHIP CARRIER MKT DWG (RECT.)	

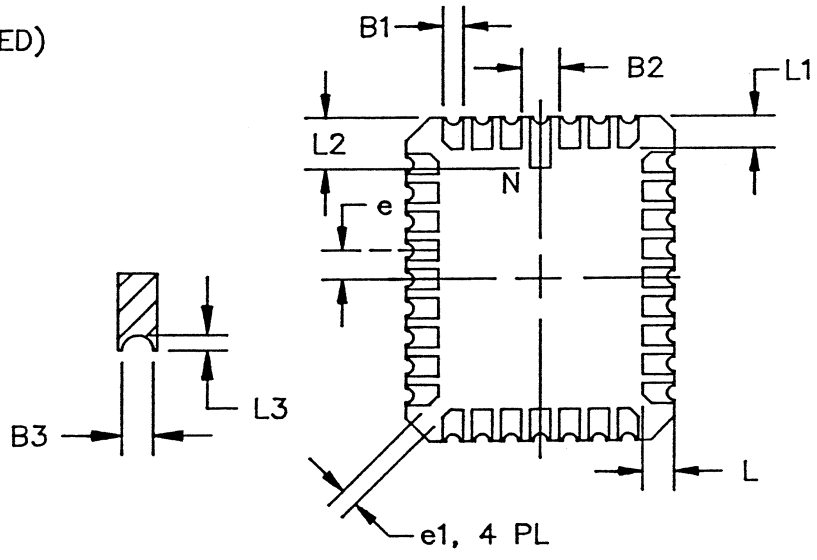
DCN	REV	DESCRIPTION	DATE	APPROVAL
17285	04	UPDATE TO STANDARDIZE DRAWING	2/2/90	S Thomas



NOTES: (UNLES OTHERWISE SPECIFIED)

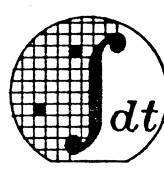
1. ALL DIMENSIONS ARE IN INCHES.
2. BSC - BASIC LEAD SPACING BETWEEN CENTERS.

SYMBOL	MIN	MAX
A	.060	.120
A1	.050	.088
B1	.022	.028
B2	.072 REF	
B3	.006	.022
D	.442	.458
D1	.300 BSC	
D2	.150 BSC	
D3	-	.458
E	.540	.560
E1	.400 BSC	
E2	.200 BSC	
E3	-	.558
e	.050 BSC	
e1	.015	-
h	.040 REF	
J	.020 REF	
L	.045	.055
L1	.045	.055
L2	.077	.093
L3	.003	.015
ND	7	
NE	9	
N	32	



MIL-M-38510	CONFIGURATION	EXCEPTIONS
JEDEC	C-12	NONE
	NOT REGISTERED	

TOLERANCES UNLESS OTHERWISE SPECIFIED  
 FRAC DEC ANGLES  
 ± - ± - ± -



**Integrated Device Technology, Inc.**  
 3236 Scott Blvd., Santa Clara, CA 95051  
 (408) 727-6116 FAX: (408) 727-2328

APPROVALS	DATE
DRAWN <i>AA</i>	02/90
CHECKED <i>DA</i>	2/90

**32 PIN LEADLESS CHIP CARRIER MKT DWG (RECT.)**

SCALE	SIZE	DRAWING NO.	REV
N/A	A	PSC-2002	04

DO NOT SCALE DRAWING      SHEET 2 OF 2