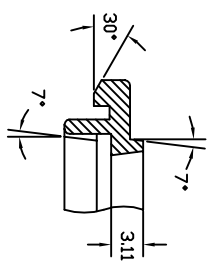
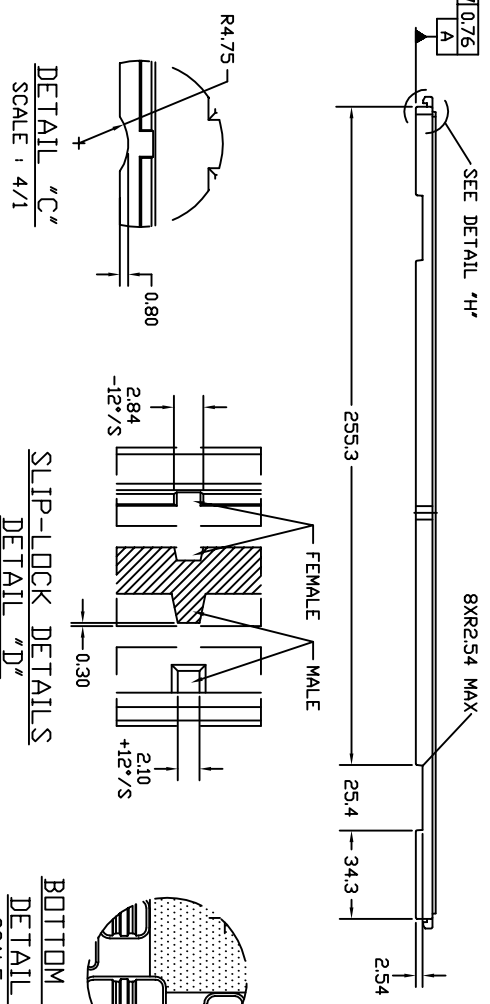


SECTION "X-X"
TRAY STACKING DETAIL
SCALE : 3/1



DETAIL "H"
SCALE : 4/1



DETAIL "C"
SCALE : 4/1

SLIP-LOCK DETAILS
DETAIL "D"
SCALE : 4/1

BOTTOM VIEW
DETAIL "G"
SCALE : 4/1

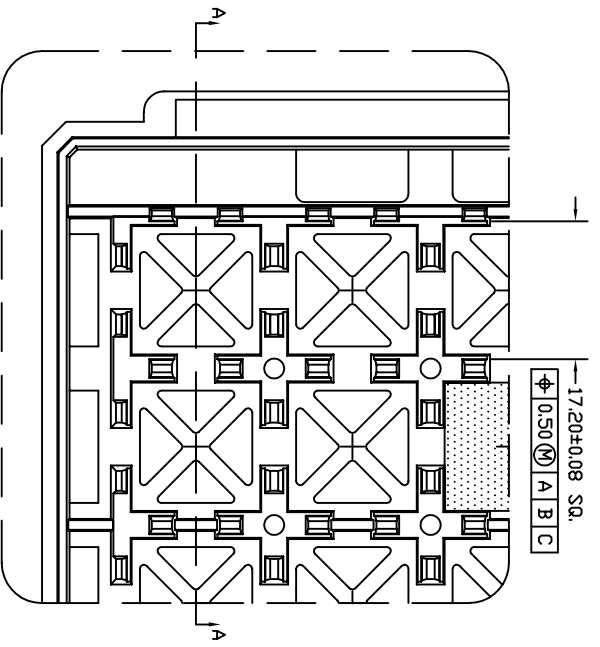
NOTES : (UNLESS OTHERWISE SPECIFIED)
1. NUMBER OF POCKET : 6 X 15 = 90 POCKETS

TOLERANCES UNLESS OTHERWISE SPECIFIED
DECIMAL : X ±.25
.XX ±.13
.XXX
ANGLE : ±0.5°
ANGULAR : ±

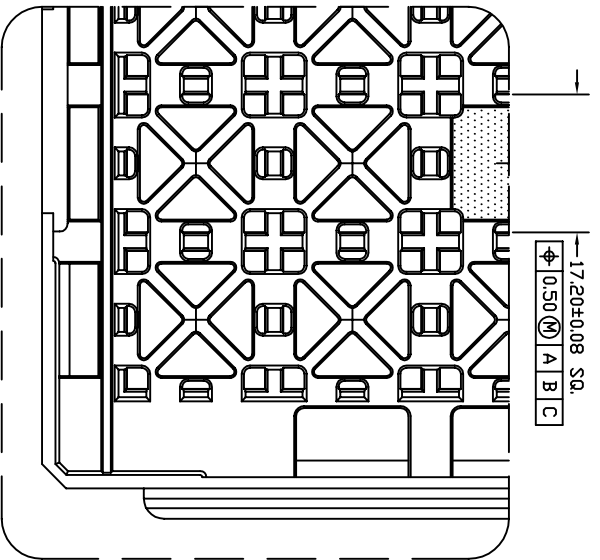


6024 Silver Creek Valley Road,
San Jose, CA 95138
PHONE: (408) 284-8200
FAX: (408) 284-3572

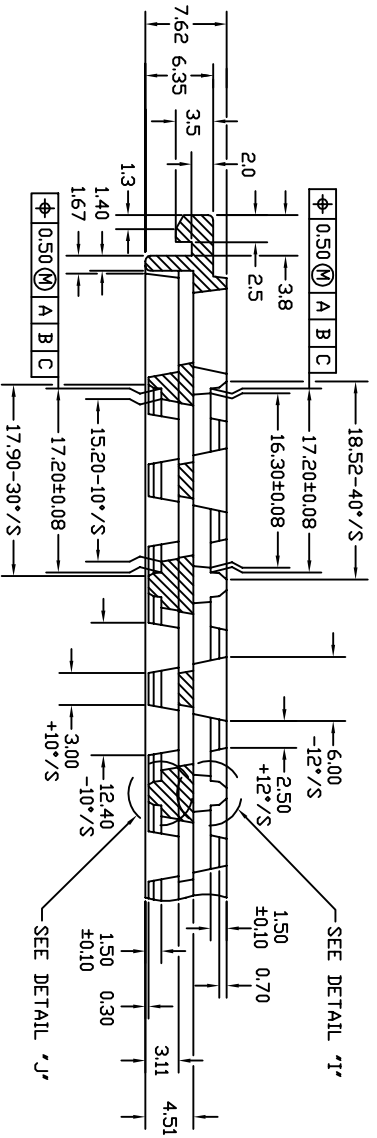
TITLE: BMG 256 SHIPPING TRAY (OID DIVISION)		SCALE N/A	
STOCK NO. N/A	DRAWING NO. MSC-7965-A	REV 00	
DO NOT SCALE DRAWING		SHEET 1 OF 2	



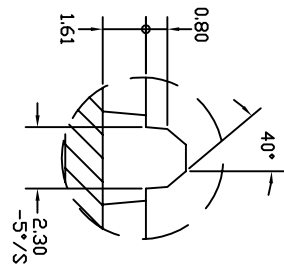
TOP VIEW
DETAIL "B"
SCALE : 3/1
(FROM SHT.#1)



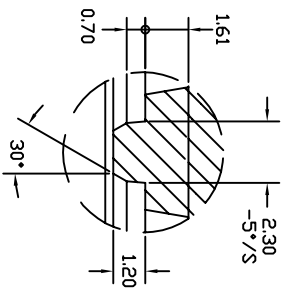
BOTTOM VIEW
DETAIL "B"
SCALE : 3/1
(FROM SHT.#1)



SECTION "A-A"
SCALE : 4/1



DETAIL "I"
SCALE : 10/1



DETAIL "J"
SCALE : 10/1

TOLERANCES UNLESS OTHERWISE SPECIFIED
DECIMAL :
.X ±.25
.XX ±.13
.XXX
ANGULAR : ±
ANGULAR : ±



6024 Silver Creek Valley Road,
San Jose, CA 95138
PHONE: (408) 284-8200
FAX: (408) 284-3572

TITLE:
BMG 256 SHIPPING TRAY (OID
DIVISION)

STOCK NO.	DRAWING NO.	SCALE
N/A	MSC-7965-A	N/A
DO NOT SCALE DRAWING	SHEET 2 OF 2	REV
		00