

## Important Notice

### Restrictions in Use

IDT's ZLED7015KIT-E1 Evaluation Kit hardware is designed for ZLED7015 demonstration, evaluation, laboratory setup, and module development only. The ZLED7015KIT-E1 Evaluation Kit hardware must not be used for module production or production test setups.

### Disclaimer

IDT shall not be liable for any damages arising out of defects resulting from

- (i) delivered hardware and software
- (ii) non-observance of instructions contained in this manual and in any other documentation provided to user, or
- (iii) misuse, abuse, use under abnormal conditions or alteration by anyone other than IDT.

To the extent permitted by law, IDT hereby expressly disclaims and user expressly waives any and all warranties, whether express, implied or statutory, including, without limitation, implied warranties of merchantability and of fitness for a particular purpose, statutory warranty of non-infringement and any other warranty that may arise by reason of usage of trade, custom or course of dealing.

## Contents

1	Kit Contents .....	3
2	Kit Description .....	3
2.1.	ZLED7015 Overview .....	3
2.2.	ZLED7015KIT-E1 Evaluation Board Overview.....	3
2.3.	Connections.....	4
2.4.	Power Supply.....	5
2.5.	Circuit Operation.....	5
2.6.	Schematic Diagram .....	6
3	Ordering Information .....	7
4	Related Documents.....	7
5	Glossary .....	7
6	Document Revision History.....	8

**List of Figures**

Figure 2.1 ZLED7015KIT-E1 Evaluation Board (Top View) ..... 4  
Figure 2.2 ZLED7015KIT-E1 Schematic Diagram ..... 6

**List of Tables**

Table 2.1 Connections for the Evaluation Board ..... 4

## 1 Kit Contents

The ZLED7015KIT-E1 Evaluation Kit includes the following:

- ZLED7015-E1 Evaluation Board v.X
- Five ZLED7015 samples, MSOP10 with thermal pad package
- *ZLED7015KIT-E1 Evaluation Kit Start-up Information*
- *Kit Disclaimer*

The ZLED7015KIT-E1 Evaluation Kit is fully assembled and ready for immediate operation.

## 2 Kit Description

### 2.1. ZLED7015 Overview

The ZLED7015KIT-E1 Evaluation Kit provides a quick and easy method for evaluating the ZLED7015 within its basic application circuit. Reading the *ZLED7015 Data Sheet* before using the Evaluation Kit is recommended for understanding the operation of the ZLED7015 and the Evaluation Board.

The ZLED7015 is a constant current boost converter with an internal FET switch. The step-up converter topology allows series connection of multiple white LEDs so that the LED currents are identical for uniform brightness. The nominal output current can be set by an external resistor with the option to also dim the brightness of the LEDs with a PWM signal or DC voltage. A low 0.3V feedback voltage minimizes power loss in the current setting resistor for better efficiency. The over-voltage protection (OVP) circuit safeguards the chip and the system even if the load is not connected. The ZLED7015 is available in an MSOP-10 package.

The ZLED7015 IC is designed for LED current drive applications of up to 1.8A.

The main features of ZLED7015 driver are

- 6VDC to 30VDC supply voltage
- High efficiency: up to 95%
- PWM or DC voltage dimming control
- Fast 1.0MHz switching frequency
- Internal high power 35V MOSFET switch
- Adjustable over-voltage protection (including open LED string detection)
- Over-temperature protection

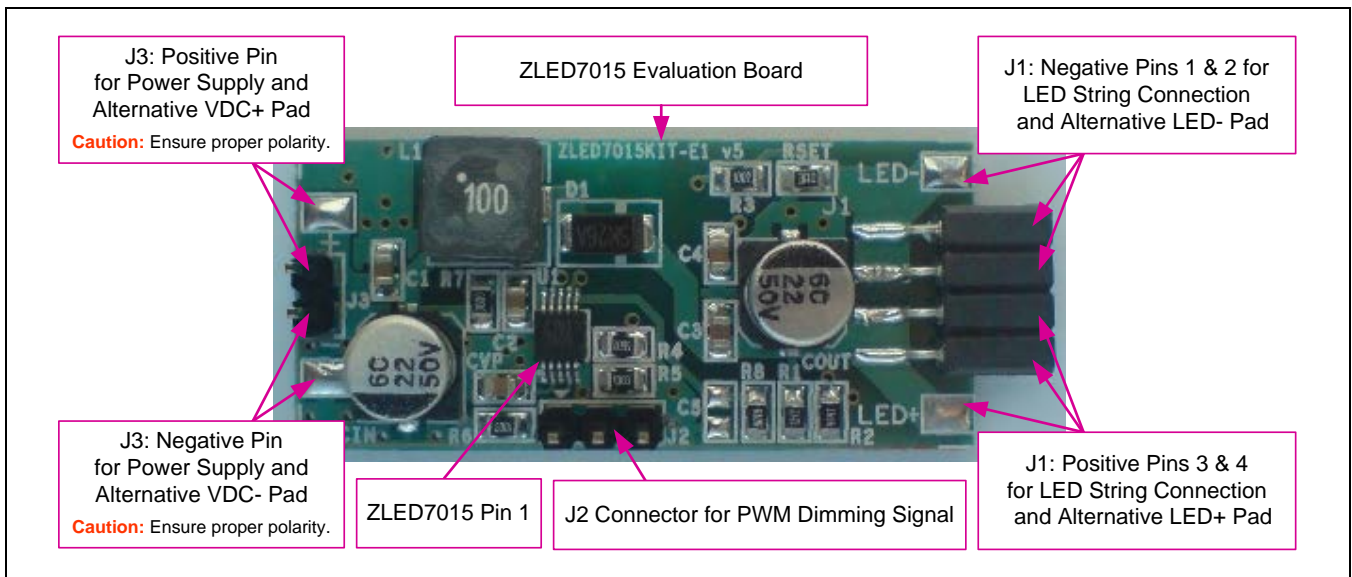
### 2.2. ZLED7015KIT-E1 Evaluation Board Overview

The Evaluation Board contains a standard 4-pin terminal connector to allow the user to easily connect and supply an LED's board. The Evaluation Board also has two LED power pads (LED+ and LED-) to provide more flexibility in supplying a power LED or LED string. A 10 $\mu$ H shielded inductor sets the nominal frequency around 300kHz. The shielded inductor has been selected to minimize radiated EMI. The layout with any switching regulator is crucial to minimize radiated EMI. This reference design keeps the critical track lengths to a minimum. Ground has been maximized around critical areas.

The Evaluation Board offers the following features and benefits:

- Wide input voltage range (see section 2.4).
- Standard 2.54mm 4-pin header for attaching of LEDs and additional duplicate SMD pads (LED- , LED+).
- Standard 2.54mm 2-pin male header and alternative duplicate SMD pads for power supply.
- Standard 2.54mm 3-pin male header for dimming the LED brightness with an external PWM signal.
- All devices are SMD and on the same side of the board (as shown in the top view given in Figure 2.1).
- Maximized power ground copper on top and bottom sides with thermal vias for good heat distribution.
- Track connecting R2 (current sense resistor) to ZLED7015 is as short as possible (sense tracks).
- The C3 filter capacitor and COUT are connected as close as possible to the LED output pins.
- The flyback current path is as short as possible to ensure system precision and efficiency.

**Figure 2.1 ZLED7015KIT-E1 Evaluation Board (Top View)**



### 2.3. Connections

Refer to Figure 2.1 for an illustration of the following set up for the Evaluation Board.

**Table 2.1 Connections for the Evaluation Board**

Connector	Description
J1	Standard 2.54mm 4-pin female header with the following connections. Pins 1 and 2: Negative pole for voltage output to drive the LED string (also see LED- pad) Pins 3 and 4: Positive pole for voltage output to drive the LED string (also see LED+ pad)
J2	Standard 2.54mm 3-pin male header for dimming the brightness of the LEDs with an external PWM signal or DC voltage.
J3	Standard 2.54mm 2-pin male header for power supply. Input voltage range: 6VDC to 30VDC. See section 2.4 for additional requirements.
VDC+	Positive pad for an optional alternative connection for the power supply (instead of J3).

Connector	Description
VDC-	Negative pad for an optional alternative connection for the power supply (instead of J3).
LED+	Positive pad for an optional alternative connection for the positive ZLED7015 driver supply voltage (instead of J1, pins 3 and 4).
LED-	Negative pad for an optional alternative connection for the negative ZLED7015 driver supply voltage (instead of J1, pins 1 and 2).

## 2.4. Power Supply

The Evaluation Board requires a DC power supply of  $\geq 6V$  for the LED string, but it also must be 3V higher than the normally working output voltage (the total forward voltage of the LED or the LED string).



**Caution:** Ensure proper polarity when making connections. The system is not reverse polarity protected.

See section 2.3 for connection options for the power supply.

## 2.5. Circuit Operation

The reference current on the Evaluation Board has been set to 100mA but can be adjusted by changing the Rset set resistor according to the formula:

$$I_{LED} = V_{FB} / R_{SET}, [A]$$

### Where

$I_{LED}$  = Average output current through the LED(s) in amperes

$V_{FB}$  = Internal feedback reference voltage of the ZLED7015: approx. 0.3V

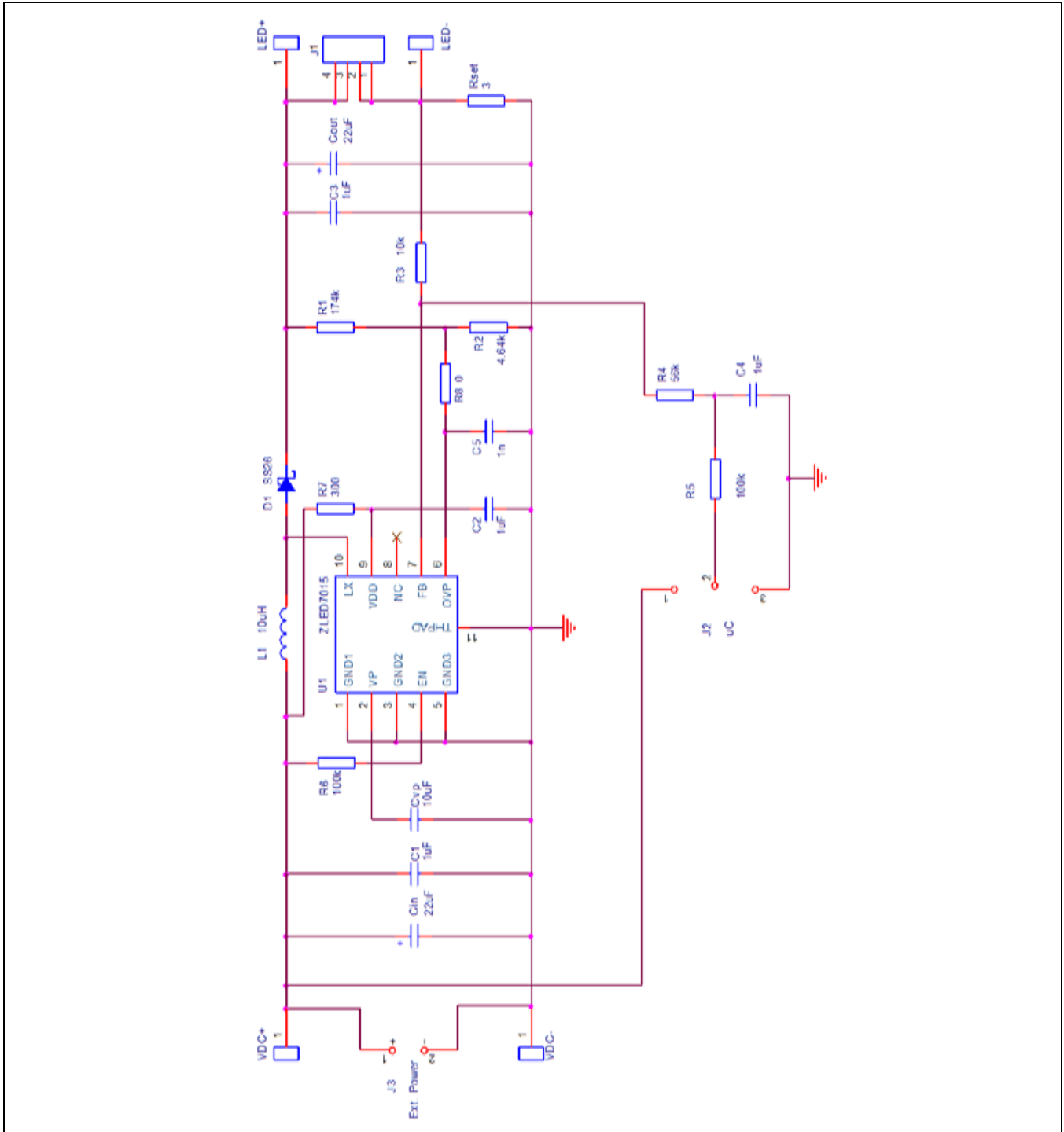
$R_{SET}$  = Nominal current output setting resistor, which is approx.  $3\Omega$  on the Evaluation Board

For  $R_{SET} = 3.0\Omega \rightarrow I_{LED} = 0.1A$

For detailed calculations about dimming control, PWM signal control, and setting the over-voltage protection level, refer to the ZLED7015 datasheet.

## 2.6. Schematic Diagram

Figure 2.2 ZLED7015KIT-E1 Schematic Diagram



### 3 Ordering Information

Product Sales Code	Description
ZLED7015KIT-E1	ZLED7015KIT-E1 Evaluation Kit VX.x including 5 IC samples

### 4 Related Documents

Document
ZLED7015 Datasheet

Visit [www.IDT.com/ZLED7015](http://www.IDT.com/ZLED7015) or contact your nearest sales office for the latest version of these documents.

### 5 Glossary

Term	Description
LED	Light Emitted Diode
EMI	Electromagnetic Interference
MOSFET	Metal–Oxide–Semiconductor Field Effect Transistor
PCB	Printed Circuit Board
PWM	Pulse Width Modulation
MSOP10	Mini Small Outline Package

## 6 Document Revision History

Revision	Date	Description
1.00	March 6, 2013	First release.
	April 20, 2016	Changed to IDT branding.



## Notice

1. Descriptions of circuits, software and other related information in this document are provided only to illustrate the operation of semiconductor products and application examples. You are fully responsible for the incorporation or any other use of the circuits, software, and information in the design of your product or system. Renesas Electronics disclaims any and all liability for any losses and damages incurred by you or third parties arising from the use of these circuits, software, or information.
2. Renesas Electronics hereby expressly disclaims any warranties against and liability for infringement or any other claims involving patents, copyrights, or other intellectual property rights of third parties, by or arising from the use of Renesas Electronics products or technical information described in this document, including but not limited to, the product data, drawings, charts, programs, algorithms, and application examples.
3. No license, express, implied or otherwise, is granted hereby under any patents, copyrights or other intellectual property rights of Renesas Electronics or others.
4. You shall not alter, modify, copy, or reverse engineer any Renesas Electronics product, whether in whole or in part. Renesas Electronics disclaims any and all liability for any losses or damages incurred by you or third parties arising from such alteration, modification, copying or reverse engineering.
5. Renesas Electronics products are classified according to the following two quality grades: "Standard" and "High Quality". The intended applications for each Renesas Electronics product depends on the product's quality grade, as indicated below.
  - "Standard": Computers; office equipment; communications equipment; test and measurement equipment; audio and visual equipment; home electronic appliances; machine tools; personal electronic equipment; industrial robots; etc.
  - "High Quality": Transportation equipment (automobiles, trains, ships, etc.); traffic control (traffic lights); large-scale communication equipment; key financial terminal systems; safety control equipment; etc.Unless expressly designated as a high reliability product or a product for harsh environments in a Renesas Electronics data sheet or other Renesas Electronics document, Renesas Electronics products are not intended or authorized for use in products or systems that may pose a direct threat to human life or bodily injury (artificial life support devices or systems; surgical implantations; etc.), or may cause serious property damage (space system; undersea repeaters; nuclear power control systems; aircraft control systems; key plant systems; military equipment; etc.). Renesas Electronics disclaims any and all liability for any damages or losses incurred by you or any third parties arising from the use of any Renesas Electronics product that is inconsistent with any Renesas Electronics data sheet, user's manual or other Renesas Electronics document.
6. When using Renesas Electronics products, refer to the latest product information (data sheets, user's manuals, application notes, "General Notes for Handling and Using Semiconductor Devices" in the reliability handbook, etc.), and ensure that usage conditions are within the ranges specified by Renesas Electronics with respect to maximum ratings, operating power supply voltage range, heat dissipation characteristics, installation, etc. Renesas Electronics disclaims any and all liability for any malfunctions, failure or accident arising out of the use of Renesas Electronics products outside of such specified ranges.
7. Although Renesas Electronics endeavors to improve the quality and reliability of Renesas Electronics products, semiconductor products have specific characteristics, such as the occurrence of failure at a certain rate and malfunctions under certain use conditions. Unless designated as a high reliability product or a product for harsh environments in a Renesas Electronics data sheet or other Renesas Electronics document, Renesas Electronics products are not subject to radiation resistance design. You are responsible for implementing safety measures to guard against the possibility of bodily injury, injury or damage caused by fire, and/or danger to the public in the event of a failure or malfunction of Renesas Electronics products, such as safety design for hardware and software, including but not limited to redundancy, fire control and malfunction prevention, appropriate treatment for aging degradation or any other appropriate measures. Because the evaluation of microcomputer software alone is very difficult and impractical, you are responsible for evaluating the safety of the final products or systems manufactured by you.
8. Please contact a Renesas Electronics sales office for details as to environmental matters such as the environmental compatibility of each Renesas Electronics product. You are responsible for carefully and sufficiently investigating applicable laws and regulations that regulate the inclusion or use of controlled substances, including without limitation, the EU RoHS Directive, and using Renesas Electronics products in compliance with all these applicable laws and regulations. Renesas Electronics disclaims any and all liability for damages or losses occurring as a result of your noncompliance with applicable laws and regulations.
9. Renesas Electronics products and technologies shall not be used for or incorporated into any products or systems whose manufacture, use, or sale is prohibited under any applicable domestic or foreign laws or regulations. You shall comply with any applicable export control laws and regulations promulgated and administered by the governments of any countries asserting jurisdiction over the parties or transactions.
10. It is the responsibility of the buyer or distributor of Renesas Electronics products, or any other party who distributes, disposes of, or otherwise sells or transfers the product to a third party, to notify such third party in advance of the contents and conditions set forth in this document.
11. This document shall not be reprinted, reproduced or duplicated in any form, in whole or in part, without prior written consent of Renesas Electronics.
12. Please contact a Renesas Electronics sales office if you have any questions regarding the information contained in this document or Renesas Electronics products.

(Note1) "Renesas Electronics" as used in this document means Renesas Electronics Corporation and also includes its directly or indirectly controlled subsidiaries.

(Note2) "Renesas Electronics product(s)" means any product developed or manufactured by or for Renesas Electronics.

(Rev.4.0-1 November 2017)

## Corporate Headquarters

TOYOSU FORESIA, 3-2-24 Toyosu,  
Koto-ku, Tokyo 135-0061, Japan  
[www.renesas.com](http://www.renesas.com)

## Contact Information

For further information on a product, technology, the most up-to-date version of a document, or your nearest sales office, please visit:  
[www.renesas.com/contact/](http://www.renesas.com/contact/)

## Trademarks

Renesas and the Renesas logo are trademarks of Renesas Electronics Corporation. All trademarks and registered trademarks are the property of their respective owners.