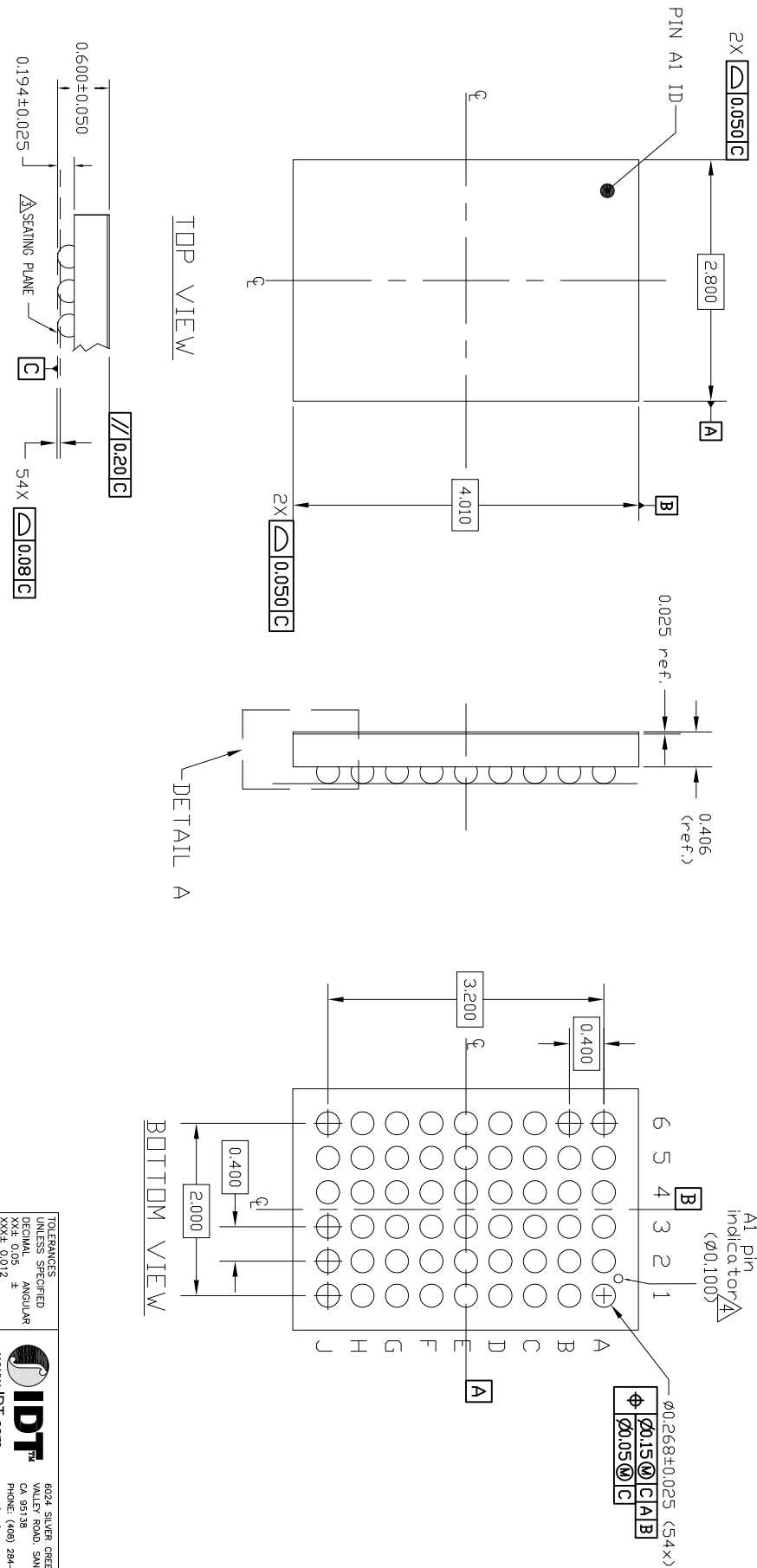


REVISIONS			
REV	DESCRIPTION	DATE	AUTHOR
00	INITIAL RELEASE	02/19/16	JH
01	CHANGE BACKSIDE COATING TO 0.25	04/13/16	JH
02	CHANGED PKG. Y-AXIS DIMENSION TO 4010UM	01/06/16	CM

NOTES:

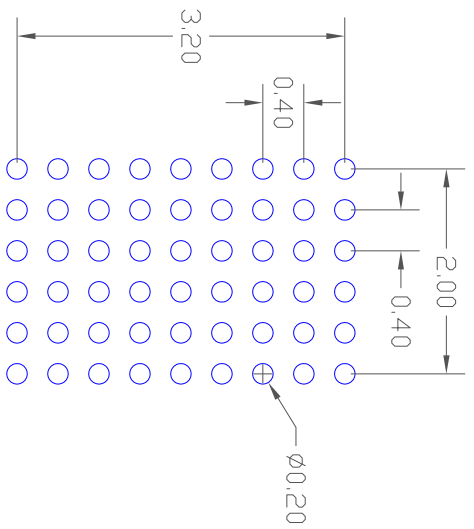
1. ALL DIMENSIONS AND TOLERANCES ARE PER ASME Y14.5M-1994.
  2. ALL DIMENSIONS ARE IN MILLIMETERS.
- SEATING PLANE AND PRIMARY DATUM -C- ARE DEFINED BY THE CONTACT POINTS OF THREE OR MORE SOLDER BALLS THAT SUPPORT THE DEVICE WHEN PLACED ON A TOP OF A PLANAR SURFACE.
- BOTTOM PIN#1 INDICATOR OPTIONAL.



DETAIL A  
 (ROTATED 90 DEG CW)

<b>TOLERANCES UNLESS SPECIFIED</b> DECIMAL ±0.05 ANGULAR ± XXX± 0.012 XXXX±		<b>6024 SILVER GREEK</b> VALLEY ROAD, SAN JOSE, PHOENIX, AZ 85001 PHONE: (480) 284-4300 FAX: (480) 284-4372	
<b>APPROVALS</b> DRAWN: <i>gdc</i> CHECKED:	DATE: 02/19/16	 www.IDT.com	TITLE: AHG54 PACKAGE OUTLINE 2.800x4.010mm BODY 0.4mm PITCH DSBGA
SIZE: C DRAWING No.: PSC-4647	DO NOT SCALE DRAWING	REV: 02	SHEET 1 OF 2

REVISIONS			
REV	DESCRIPTION	DATE	AUTHOR
00	INITIAL RELEASE	02/19/16	JH
01	CHANGE BACKSIDE COATING TO 0.25	04/13/16	JH
02	CHANGED PKG. Y-AXIS DIMENSION TO 4010UM	01/08/16	CM



RECOMMENDED LAND PATTERN DIMENSION

- NOTE:
1. ALL DIMENSIONS ARE IN MM, ANGLES IN DEGREES.
  2. TOP DOWN VIEW, AS VIEW ON PCB.
  3. NSMD LAND PATTERN ASSUMED.
  4. LAND PATTERN RECOMMENDATION AS PER IPC-7351 GENERIC REQUIREMENT FOR SURFACE MOUNT DESIGN AND LAND PATTERN.

TOLERANCES UNLESS SPECIFIED		6024 SILVER GREY	
DECIMAL	ANGULAR	MATERIAL: 500, 505E	
XX± 0.05	±	CA 95138	
XXX± 0.012		PHONE: (408) 284-8200	
XXXX±		FAX: (408) 284-3572	
APPROVALS	DATE	TITLE	
DRAWN /RAC	02/19/16	AHG54 PACKAGE OUTLINE	
CHECKED		2.800x4.010mm BODY	
		0.4mm PITCH DS98A	
SIZE	DRAWING No.	REV	
C	PSC-4647	02	
DO NOT SCALE DRAWING		SHEET	2 OF 2

