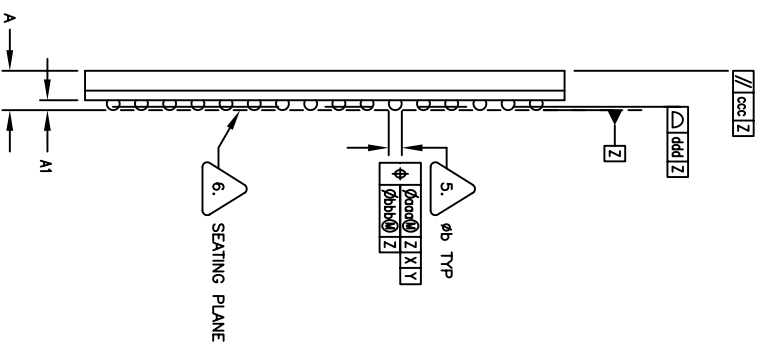


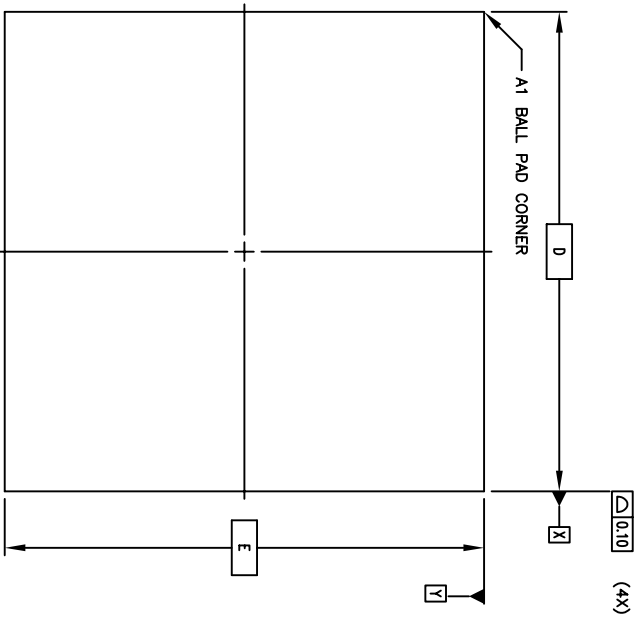
REV	DESCRIPTION	DATE	APPROVED
01	JEDEC VARIATION MODIFICATION	07/11/00	D.G
02	UPDATE MAX. THICKNESS A	10/02/02	T.V
03	REMOVE THICKNESS A2	05/08/03	T.V
04	ADD "GREEN" BCG NOMENCLATURE	10/19/04	T.V
05	COMBINE POD & LAND PATTERN	5/14/13	RC

REVISIONS

SYMBOL	JEDEC VARIATION			NOTE
	MIN	NOM	MAX	
A	1.30	1.40	1.70	
A1	.31	.36	.41	
D	17.00 BSC			
D1	15.00 BSC			
E	17.00 BSC			
E1	15.00 BSC			
MD	16			3
ME	16			3
N	256			4
e	1.00 BSC			
b	.41	.46	.51	5
gqq	-	-	.15	
bbb	-	-	.08	
ccc	-	-	.10	
ddd	-	-	.12	



SIDE VIEW



TOP VIEW

UNLESS OTHERWISE SPECIFIED
DIMENSIONS ARE IN MILLIMETERS
DECIMAL
XX .50/0
XXX .50/0
XXXX .50/0

APPROVALS DATE
DRAWN 03/06 06/09/00
CHECKED

TITLE:
BC/BCG 256 PACKAGE OUTLINE
17.0 X 17.0 mm BODY CABGA

DRAWING No. PSC-4093

SIZE SCALE REV
C N/A 05

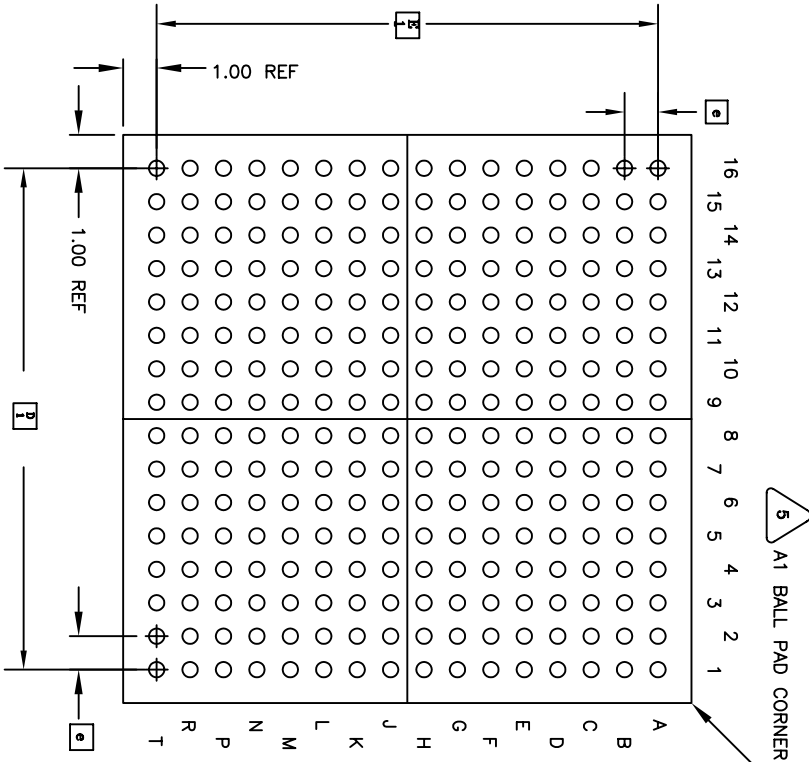
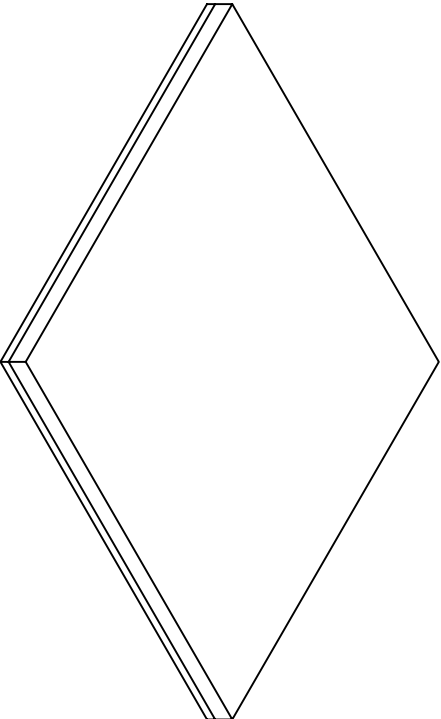
DO NOT SCALE DRAWING SHEET 1 OF 3

www.IDT.com

IDT™

8024 SILVER CREEK VALLEY ROAD
SAN JOSE CA, 95138
PHONE: (408) 284-8200
FAX: (408) 284-8591

REVISIONS			
REV	DESCRIPTION	DATE	APPROVED
01	JEDC VARIATION MODIFICATION	07/11/00	D.G
02	UPDATE MAX. THICKNESS A	10/02/02	T.V
03	REMOVE THICKNESS A2	05/08/03	T.V
04	ADD "GREEN" BCG NOMENCLATURE	10/19/04	T.V
05	COMBINE POD & LAND PATTERN	5/14/13	RG



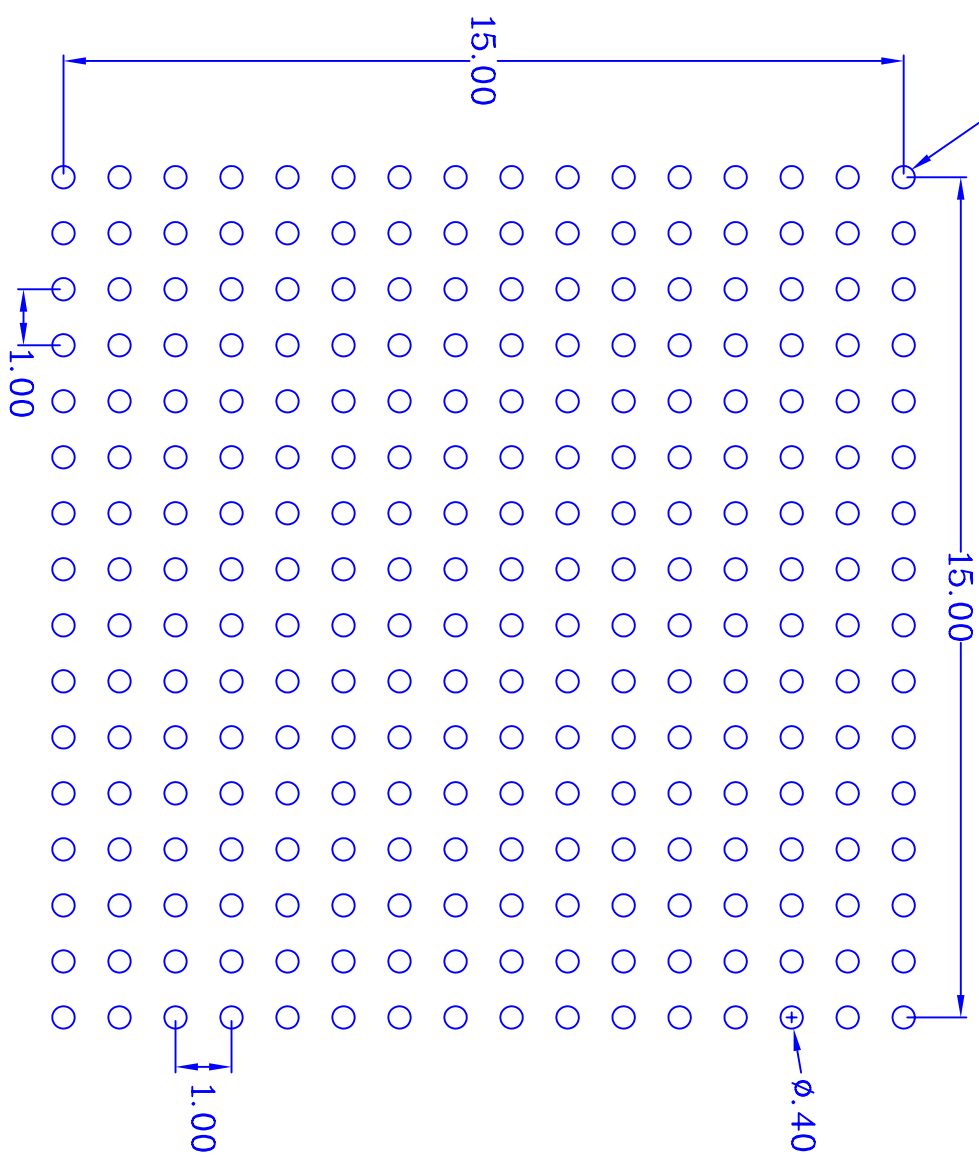
BOTTOM VIEW
256 SOLDER BALLS

NOTES: UNLESS OTHERWISE SPECIFIED

- ALL DIMENSIONS AND TOLERANCES CONFORM TO ASME Y14.5M-1994.
- "e" REPRESENTS THE BASIC SOLDER BALL GRID PITCH.
- "MD" IS THE MAXIMUM SOLDER BALL MATRIX SIZE IN THE "D" DIRECTION.
- "ME" IS THE MAXIMUM SOLDER BALL MATRIX SIZE IN THE "E" DIRECTION.
- "N" IS THE MAXIMUM ALLOWABLE NUMBER OF SOLDER BALLS.
- DIMENSION "b" IS MEASURED AT THE MAXIMUM SOLDER BALL DIAMETER, PARALLEL TO PRIMARY DATUM Z.
- PRIMARY DATUM Z AND SEATING PLANE ARE DEFINED BY THE SPHERICAL CROWNS OF THE SOLDER BALLS.
- "A1" ID CORNER MUST BE IDENTIFIED. IDENTIFICATION MAY BE BY MEANS OF CHAMFER, METALLIZED OR INK MARK, INDENTATION OR OTHER FEATURE OF THE PACKAGE BODY.
- ALL DIMENSIONS ARE IN MILLIMETERS.
- THIS DRAWING CONFORMS TO JEDEC PUBLICATION 95 REGISTRATION MO-192 VARIATION AAF-1
- EXCEPTIONS:
b MIN=0.41 NOM=0.46 MAX=0.51

UNLESS OTHERWISE SPECIFIED DIMENSIONS ARE IN MILLIMETERS DECIMALS ARE IN ANGULAR UNITS XXXX.XX			
APPROVALS	DATE	TITLE	6024 SILVER CREEK VALLEY ROAD SAN JOSE CA, 95138 PHONE: (408) 284-8200 FAX: (408) 284-8591
DRAWN: JJC	06/09/00	BC/BCG 256 PACKAGE OUTLINE	
CHECKED		17.0 X 17.0 mm BODY CABGA	
DRAWING No. PSC-4093		SIZE	SCALE
		C	N/A
DO NOT SCALE DRAWING		REV	05
		SHEET	2 OF 3

"A1" BALL PAD CORNER



RECOMMENDED LAND PATTERN DIMENSION (mm)

REVISIONS			
REV	DESCRIPTION	DATE	APPROVED
01	JEDEC VARIATION MODIFICATION	07/11/00	D.G
02	UPDATE MAX. THICKNESS A	10/02/02	T.V
03	REMOVE THICKNESS A2	05/08/03	T.V
04	ADD "GREEN" BCG NOMENCLATURE	10/19/04	T.V
05	COMBINE POD & LAND PATTERN	5/14/13	RC

UNLESS OTHERWISE SPECIFIED DIMENSIONS ARE IN MILLIMETERS DECIMAL XX ±0.10 XXX ±0.05 XXXX ±0.03		SPECIFIED ANGULARS ±1°	
APPROVALS	DATE	6024 SILVER CREEK VALLEY ROAD San Jose, CA 95138 PHONE: (408) 284-8200 FAX: (408) 284-8591 www.DT.com	
DRAWN JJP	06/09/00	BC/BCG256 PACKAGE OUTLINE 17.0 x 17.0 mm BODY CABGA 1.0 mm BALL PITCH CABGA	
CHECKED		DRAWING No.	PSC-4093
		SIZE	C
		SCALE	N/A
		REV	05
DO NOT SCALE DRAWING			
SHEET 3 OF 3			