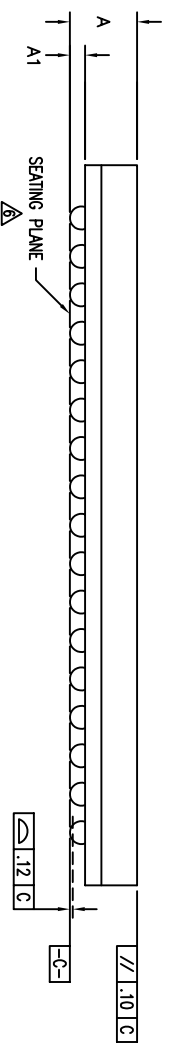
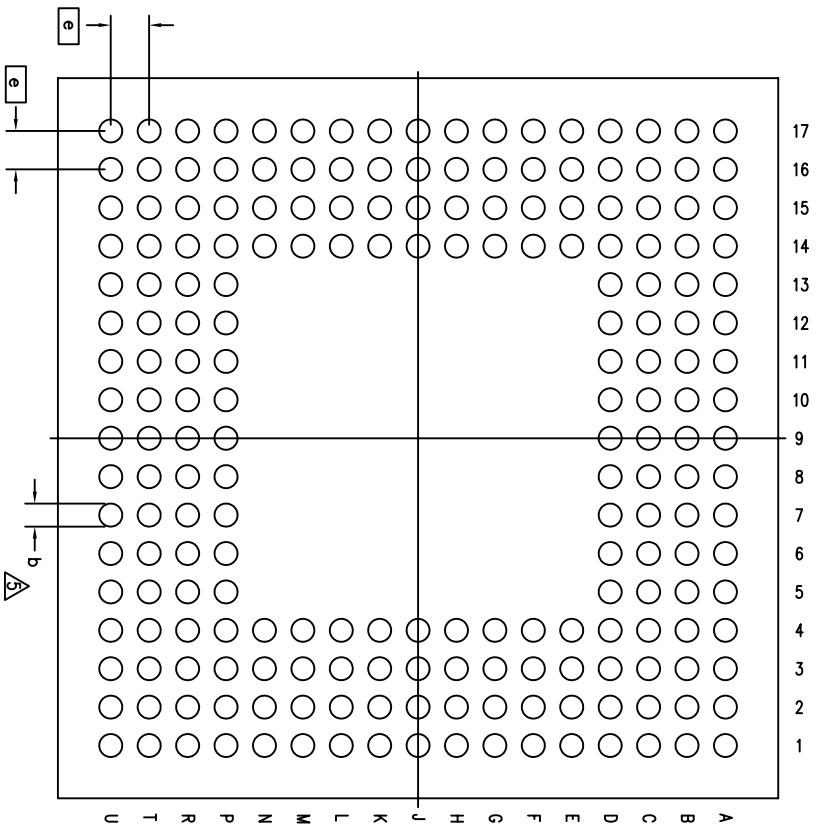
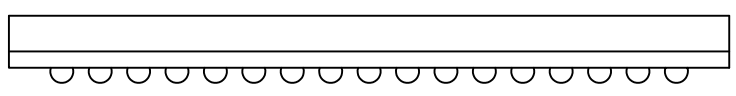
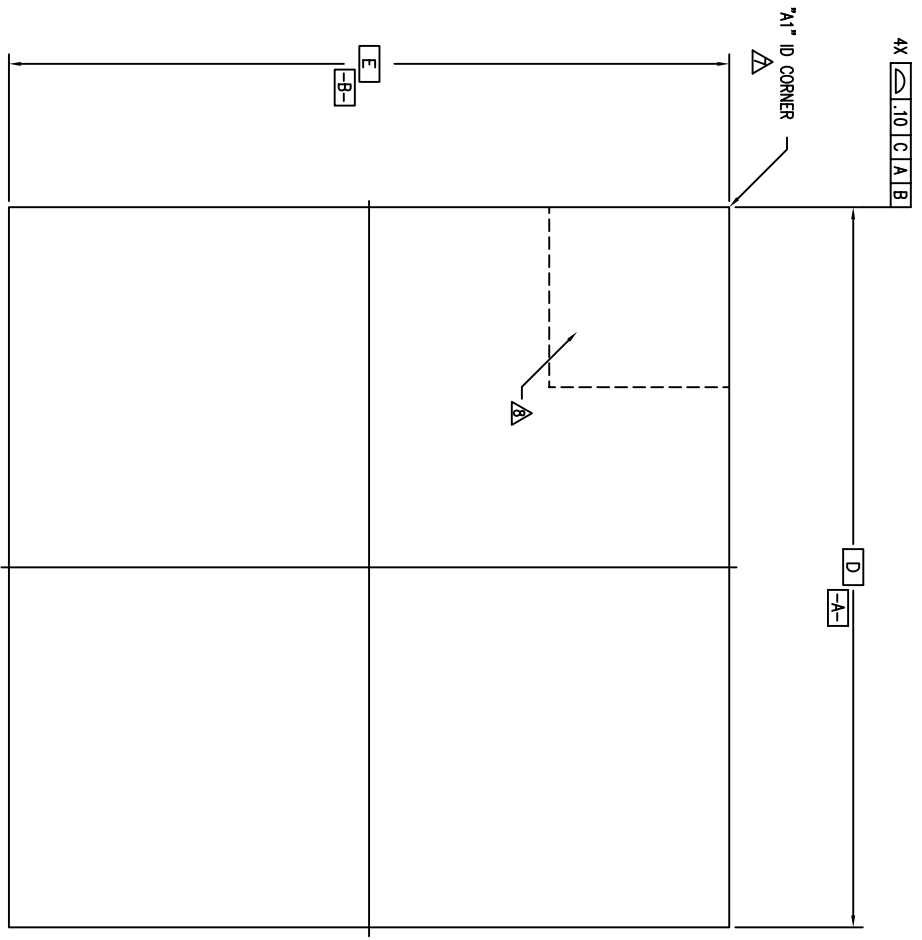
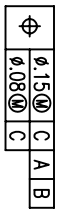


REVISIONS			
REV	DESCRIPTION	DATE	APPROVED
01	CHANGE FROM FLEX TO CHP ARROW PACKAGE	09/25/99	S. SUIE
02	MODIFY BALL DIAMETER IN THE TABLE	07/13/01	D. XUE
03	UPDATE OVERBALL THICKNESS A	02/24/03	D. XUE
04	REMOVE THICKNESS A2	05/25/03	D. XUE
05	UPDATE A1	07/25/03	D. XUE
06	ADD "GREEN" BRG NOMENCLATURE	10/15/04	TU VU
07	COMBINE P00 & LAND PATTERN	5/23/13	KS



(208 BALL SHOWN)

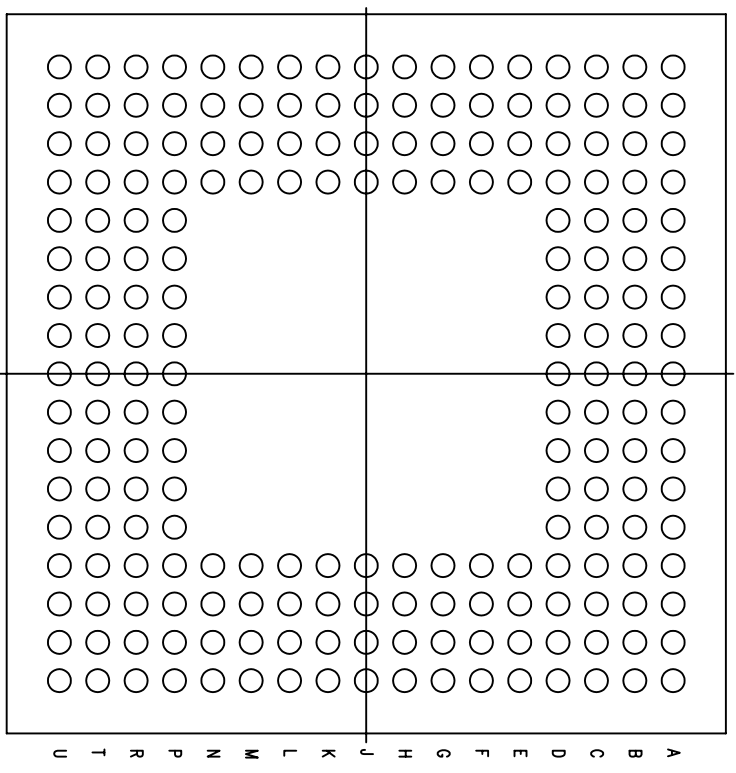


TOLERANCES UNLESS SPECIFIED			9024 SILVER CREEK VALLEY ROAD SAN JOSE CA 95138 PHONE: (408) 284-8200 FAX: (408) 284-8591	
DECIMAL	ANGULAR		WWW.IDT.COM	FPBGA
XXX±	±	DATE	TITLE	
XXXX±		03/10/99	BF/BFG PACKAGE OUTLINE	
DRAWN 9TY	CHECKED		15.0 X 15.0 mm BODY	
SIZE	DRAWING No.	REV		
C	PSC-4076	07		
DO NOT SCALE DRAWING			SHEET 1 OF 3	

REVISIONS			
REV	DESCRIPTION	DATE	APPROVED
01	CHANGE FROM FLEX TO QHP ARRAY PACKAGE	09/25/99	S. SUE
02	MODIFY BALL DIAMETER IN THE TABLE	07/13/01	D. XUE
03	UPDATE OVERBALL THICKNESS A	2/24/03	D. XUE
04	REMOVE THICKNESS A2	5/25/03	D. XUE
05	UPDATE A1	07/25/03	D. XUE
06	ADD "GREEN" BRG NOMENCLATURE	10/15/04	TU VU
07	COMBINE PAD & LAND PATTERN	5/23/13	KS


NOTES:

- 1 ALL DIMENSIONING AND TOLERANCING CONFORM TO ASME Y14.5M-1994
- 2 "e" REPRESENTS THE BASIC SOLDER BALL GRID PITCH
- 3 "M" REPRESENTS THE MAXIMUM SOLDER BALL MATRIX SIZE
- 4 "N" REPRESENTS THE BALLCOUNT NUMBER
- 5 DIMENSION "b" IS MEASURED AT THE MAXIMUM SOLDER BALL DIAMETER, PARALLEL TO PRIMARY DATUM  $\boxed{C-C}$
- 6 SEATING PLANE AND PRIMARY DATUM  $\boxed{C-C}$  ARE DEFINED BY THE SPHERICAL CROWNS OF THE SOLDER BALLS
- 7 "A" ID CORNER MUST BE IDENTIFIED BY CHAMFER, INK MARK, METALLIZED MARKING, INDENTATION OR OTHER FEATURE ON PACKAGE BODY
- 8 IF "A1" ID CORNER IS ON PACKAGE BODY, IT MUST BE LOCATED WITHIN THE ZONE INDICATED
- 9 ALL DIMENSIONS ARE IN MILLIMETERS

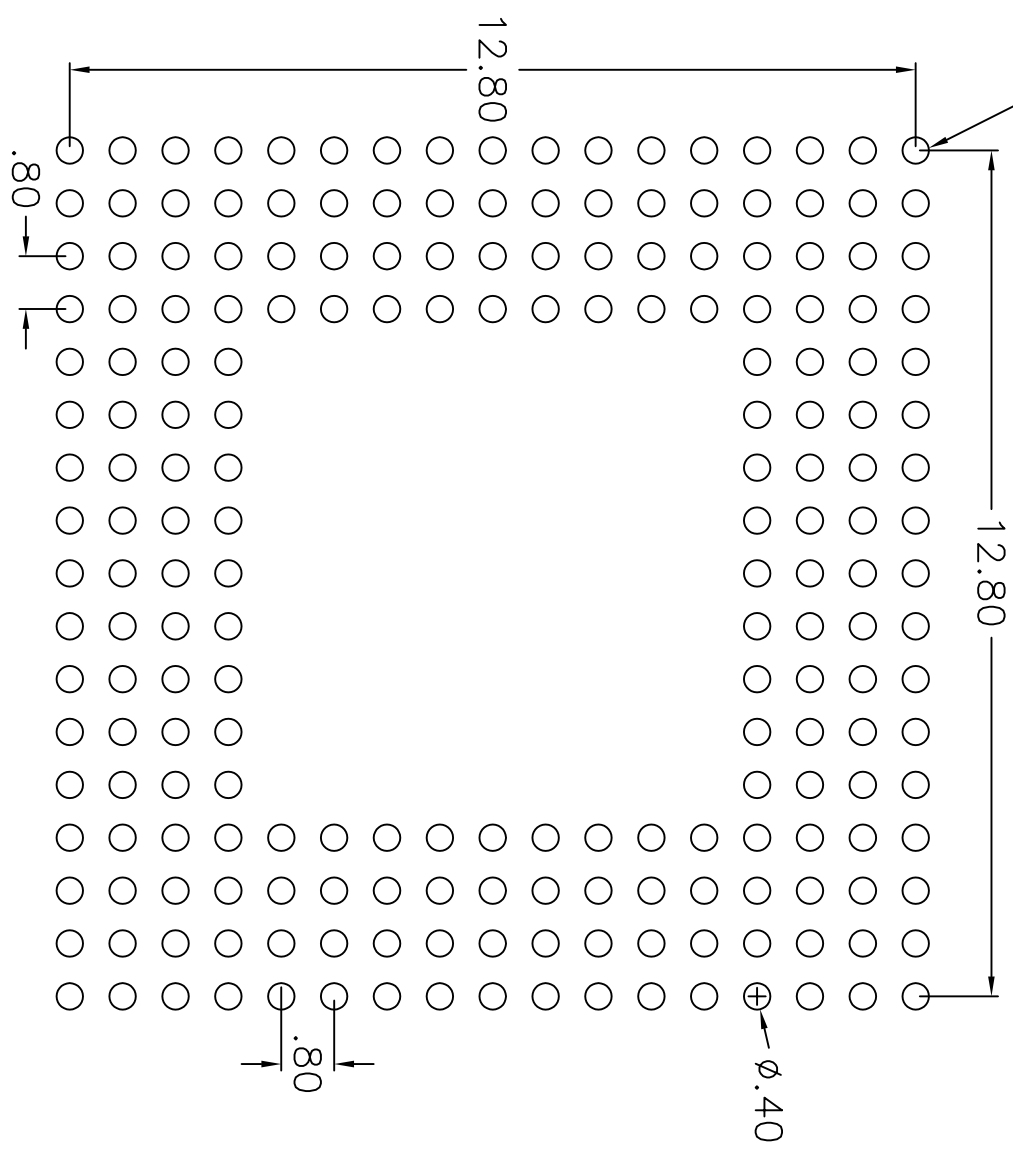


(208 BALL)

SYMBOL	JEDEC VARIATION MO-205e-AG			NOTE
	MIN	NOM	MAX	
A	1.30	1.40	1.70	
A1	.25	.40	.45	
D	15.00 BSC			
E	15.00 BSC			
M	17 X 17			3
N	208			4
e	.80 BSC			
b	.40	.45	.50	5
CENTER BALL MATRIX	N/A			


<p>TOLERANCES UNLESS SPECIFIED</p> <p>DECIMAL ±</p> <p>ANGULAR XXX±</p> <p>XXXX±</p> <p>APPROVALS</p> <p>DRAWN 97J</p> <p>CHECKED</p>		<p>DATE 03/10/99</p> <p>TITLE BF/BFG PACKAGE OUTLINE</p> <p>15.0 X 15.0 mm BODY</p> <p>FPBGA</p>	
 <p>6024 SILVER CREEK VALLEY ROAD SAN JOSE CA 95138 PHONE: (408) 284-8200 FAX: (408) 284-8591</p>		<p>SIZE C</p> <p>DRAWING NO. PSC-4076</p> <p>DO NOT SCALE DRAWING</p>	
		<p>REV 07</p> <p>SHEET 2 OF 3</p>	

"A1" ID CORNER



RECOMMENDED LAND PATTERN DIMENSION

REVISIONS			
REV	DESCRIPTION	DATE	APPROVED
01	CHANGE FROM FLEX TO CHIP ARRAY PACKAGE	09/25/99	S. SUE
02	MODIFY BALL DIAMETER IN THE TABLE	07/13/01	D. XUE
03	UPDATE OVERALL THICKNESS A	2/24/03	D. XUE
04	REMOVE THICKNESS A2	5/25/03	D. XUE
05	UPDATE A1	07/25/03	D. XUE
06	ADD "GREEN" BRG NOMENCLATURE	10/15/04	TU VU
07	COMBINE POD & LAND PATTERN	5/23/13	KS

TOLERANCES UNLESS SPECIFIED		 6024 SILVER CREEK VALLEY ROAD SAN JOSE CA 95138 PHONE: (408) 284-8200 FAX: (408) 284-8591
DECIMAL	±	
ANGULAR	±	
APPROVALS	DATE	TITLE
XXX± XXX± XXXXX±		www.IDT.com BF/BFG PACKAGE OUTLINE 15.0 X 15.0 mm BODY FPBGA
DRAWN	DATE	SIZE
2010/09/08/12		C
CHECKED		DRAWING NO.
		PSC-4076
		DO NOT SCALE DRAWING
		REV
		07
		SHEET 3 OF 3