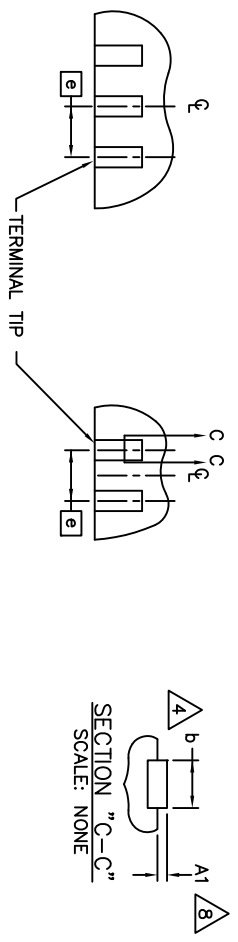
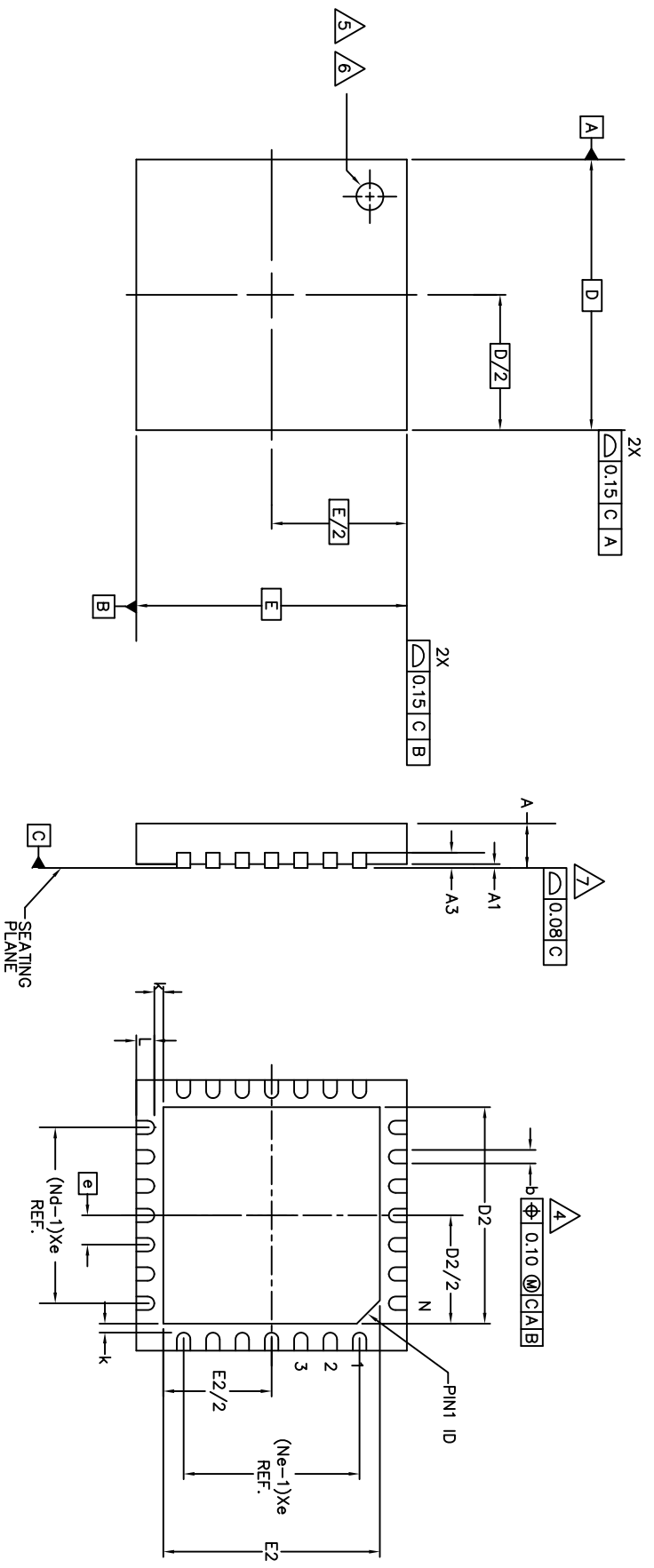


REVISIONS			
REV	DESCRIPTION	DATE	APPROVED
00	INITIAL RELEASE	11/7/12	RC
01	CHANGE FOOT & LAND PATTERN DIMENSION L TO MATCH ACTUAL Pkg DIM	10/30/13	JHUA
02	ADD NOTE RECOMMENDED LAND PATTERN	02/19/14	JHUA



TOLERANCES UNLESS SPECIFIED			
DECIMAL	±	6024 SILVERCREEK VALLEY RD SAN JOSE CA. 95138 PHONE: (408) 294-8200 FAX: (408) 294-8596	
ANGULAR	±	WWW.IDT.COM	
APPROVALS	DATE	TITLE NL/NL028 PACKAGE OUTLINE	
DRAWN	06/26/02	6.0 X 6.0 mm BODY 4.8 X 4.8 mm EPAD VFQFP-N	
CHECKED		SIZE C DRAWING No. PSC-4447 REV 02	
DO NOT SCALE DRAWING		SHEET 1 OF 3	


REVISIONS			
REV	DESCRIPTION	DATE	APPROVED
00	INITIAL RELEASE	11/7/12	RC
01	CHANGE FOR & LAND PATTERN CHANGE DIMENSION FOR LAND PATTERN PKG DIM	10/30/13	JHUA
02	ADD NOTE RECOMMENDED LAND PATTERN	02/19/14	JHUA

S M B 1	JEDEC VARIATION VJUC-3			N ₀ T _E
	MIN.	NOM.	MAX.	
Ⓜ		0.65 BSC		
N		28		2
Nd		7		2
Nb	0.25	0.30	0.35	4
D2	4.7	4.8	4.9	10
E2	4.7	4.8	4.9	10

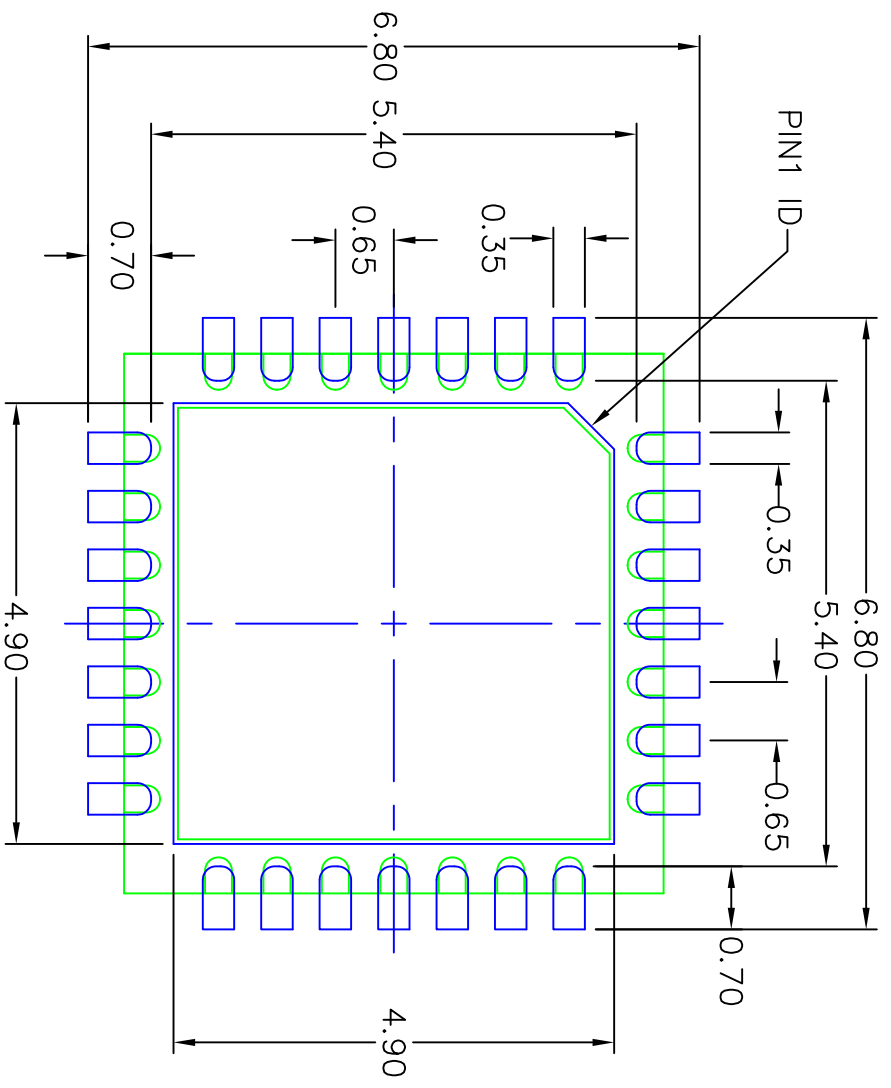
S M B 1	COMMON DIMENSIONS			N ₀ T _E
	MIN.	NOM.	MAX.	
A	0.90	1.00		
A1	0.00	0.02	0.05	7
A3		0.20 REF.		
D		6.00 BSC		
E		6.00 BSC		
K	0.10	-	-	
L	0.30	0.40	0.50	

NOTES:

1. DIMENSIONING & TOLERANCING CONFORM TO ASME Y14.5M. - 1994.
2. N IS THE NUMBER OF TERMINALS.
ND IS THE NUMBER OF TERMINALS IN X-DIRECTION &
Ne IS THE NUMBER OF TERMINALS IN Y-DIRECTION.
3. ALL DIMENSIONS ARE IN MILLIMETERS.
4. DIMENSION b APPLIES TO PLATED TERMINAL AND IS MEASURED BETWEEN 0.20 AND 0.30mm FROM TERMINAL TIP.
5. THE PIN #1 IDENTIFIER MUST EXIST ON THE TOP SURFACE OF THE PACKAGE BY USING INDENTATION MARK OR OTHER FEATURE OF PACKAGE BODY.
6. EXACT SHAPE AND SIZE OF THIS FEATURE IS OPTIONAL.
7. APPLIED TO EXPOSED PAD AND TERMINALS. EXCLUDE EMBEDDED PART OF EXPOSED PAD FROM MEASURING.
8. APPLIED ONLY FOR TERMINALS.
9. THIS OUTLINES CONFORMS TO JEDEC PUBLICATION 95 REGISTRATION MO-220, VARIATION VJUC-4 & VJUD-5 WITH THE EXCEPTION OF D2 & E2.

TOLERANCES UNLESS SPECIFIED		www.IDT.com	
DECIMAL	ANGULAR	 6024 SILVERCREEK VALLEY RD SAN JOSE CA. 95138 PHONE: (408) 284-8200 FAX: (408) 284-8596	
±	±		
APPROVALS	DATE	TITLE	SIZE
DRAWN <i>p3/p</i>	06/26/02	NL/NL628 PACKAGE OUTLINE	C
CHECKED		6.0 X 6.0 mm BODY 4.8 X 4.8 mm EPAD VFOFP-N	REV
		DRAWING No. PSC-4447	02
DO NOT SCALE DRAWING			SHEET 2 OF 3

REVISIONS			
REV	DESCRIPTION	DATE	APPROVED
00	INITIAL RELEASE	11/7/12	RC
01	CHANGE DIMENSION TO LAND PATTERN COMBINE FOOT & LAND PATTERN ADD NOTE RECOMMENDED LAND PATTERN	10/30/13	JHUA
02	ADD NOTE RECOMMENDED LAND PATTERN	2/19/14	JHUA



RECOMMENDED LAND PATTERN DIMENSION

- NOTES:
1. ALL DIMENSION ARE IN mm. ANGLES IN DEGREES.
 2. TOP DOWN VIEW, AS VIEWED ON PCB.
 3. COMPONENT OUTLINE SHOW FOR REFERENCE IN GREEN.
 4. LAND PATTERN IN BLUE. NSMD PATTERN ASSUMED.
 5. LAND PATTERN RECOMMENDATION PER IPC-7351B GENERIC REQUIREMENT FOR SURFACE MOUNT DESIGN AND LAND PATTERN.

TOLERANCES UNLESS SPECIFIED		6024 SILVERCREEK VALLEY RD	
DECIMAL	ANGULAR	SAN JOSE CA. 95138	
XXX±	±	PHONE: (408) 284-8200	
XXXX±		FAX: (408) 284-8996	
XXXX±		WWW.IDT.COM	
APPROVALS	DATE	TITLE	REV
DRAWN PJP	06/28/02	NL/NL628 PACKAGE OUTLINE	02
CHECKED		6.0 X 6.0 mm BODY	
		4.8 X 4.8 mm EPAD VFQFP-N	
		SIZE DRAWING No. PSC-4447	
		DO NOT SCALE DRAWING	SHEET 3 OF 3